

# TEAC®

## SERVICE MANUAL

---

# CTM689

68 cm CTV

---

**MODEL:** CT-M6829ST , CTM689ST

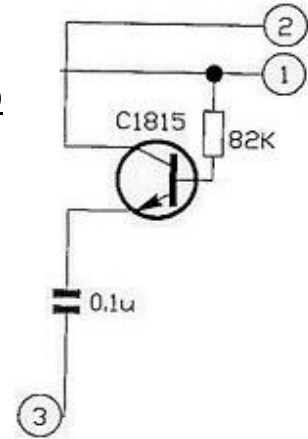
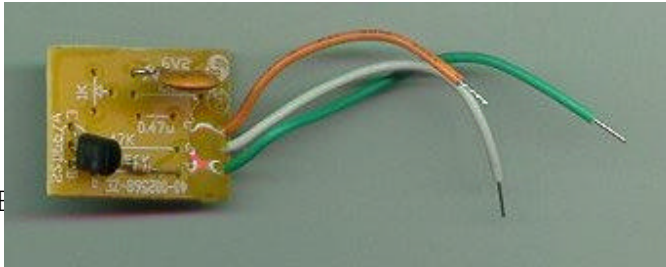
**PROBLEM:** Sound drops off in AV mode when playing Macrovision based tapes.

The problem only occurs when playing Macrovision protected material via AV input.

The modification will also improve flag-waving related problems.

April 99 production onwards is corrected.

Connect the modification pcb as per directions below. P/N CTM6829MVMOD



Connection:

∂ ( Green ) connects to pin 37 of microprocessor.

• ( White ) connects to pin 36 of microprocessor.

÷ ( Orange ) connects to pin 26 of microprocessor.

Affix the board to the top of the microprocessor using some double-sided tape.

Fabian Lubanovic  
TEAC Australia Pty Ltd.

## General Specification of Electrical Properties

1/3

This electrical specification is generally used for our current models in China market. For overseas market, the additional requirement from customers, if any, will be listed in Engineer Memo and forwarded to related departments.

Item	Basic Parameters		Unit	Standard	Condition	
1	Noise-Limited Sensitivity	VHF	$\mu\text{V}$	$\leq 250$	75 $\Omega$ antenna, S/N= 30dB	
		UHF	$\mu\text{V}$	$\leq 350$		
2	Chrominance Sensitivity	RF input	Color	$\mu\text{V}$	$\leq 75$	75 $\Omega$ antenna
			B/W	$\mu\text{V}$	$\leq 75$	
		Burst	%	$\leq 30$	Standard Video input value	
3	Synchronizing Sensitivity	RF input	$\mu\text{V}$	$\leq 75$	75 $\Omega$ antenna	
		Sync	%	$\leq 20$	Standard Video input value	
4	AGC		dB	$\geq 60$	Picture signal variation = $\pm 1.5\text{dB}$	
5	ACC		dB	$\geq +6$	Signal variation = $\pm 1.5\text{dB}$	
			dB	$\leq -6$	Signal variation = $\pm 1.5\text{dB}$	
6	AFT Pull-in Range		MHz	$\leq +1; \leq -0.7$		
7	Selectivity	Picture Carrier at Upper Adjacent channel	dB	$\geq 35$		
		Over the Picture Carrier of Upper adjacent channel	dB	$\geq 30$		
		Sound Carrier at Lower Adjacent channel	dB	$\geq 40$		
		Below the Sound Carrier of Lower Adjacent channel	dB	$\geq 30$		
8	IF Rejection		dB	$\geq 45$		
9	Image Rejection	VHF	dB	$\geq 45$		
		UHF	dB	$\geq 40$		
10	Suppression of Chrome beat Interference		dB	$\geq 10$		
11	Max. RF input voltage		mV	$\geq 100$		
12	Linear Waveform Response in Luminance Channel - Field Frequency Square-Wave Response - 2T Pulse Response. - 2T Bar/Pulse Response - Chrominance Sub-carrier response of Luminance channel		%	$\leq 5$		
			%	$\leq 12$		
			%	$\leq 12$		
			%	$\leq 5$		
13	Linear Wave form Response in Chrominance Channel - Field Frequency Square-Wave Response - 2T Pulse Response. - 2T Bar/Pulse Response		%	$\leq 5$		
			%	$\leq 10$		
			%	$\leq 10$		
14	Distortion of DC components in Luminance Channel		%	$\leq 30$		
15	Luminance/Chrominance Delay Inequality		nS	$\leq  \pm 100 $		
16	Line-time Non-linearity of Luminance signal		%	$\leq 5$		
17	Line-time Non-linearity of Chrominance signal		%	$\leq 10$		
18	Error of Chrominance Signal Demodulation Angle (PAL system)	Error of Chrominance Signal Demodulation Angle (PAL system)	$^{\circ}$	$\leq  \pm 15 $		
		Delayed Prominence Carrier signal phase Matching	$^{\circ}$	$\leq  \pm 15 $		
		Amplitude Matching of Delayed and Direct Chrominance Carrier signal	%	$\leq 15$		
19	Voltage Distortion between odd and even field.		%	$\leq 10$		

## General Specification of Electrical Properties

2/3

20	Range of Color Saturation		%	150 ~ 200		
21	Frequency Response of Video signal	PAL	MHz	≥3.5		
		NTSC	MHz	≥2.5		
22	Effective Scanning Area	V	%	90 ~ 95	Philips Pattern Generator	
		H	%	90 ~ 95	Philips Pattern Generator	
23	Non-linearity of Raster	V	%	≤8		
		H	%	≤10		
24	Geometrical Distortion		%	≤3		
25	Range of Horizontal Scan	Pull-in	Hz	≥ ±200		
		Hold	Hz	≥ ±400		
26	Range of Vertical Scan		Hz	≥6		
27	Range of Color Synchronization	Pull-in	Hz	≥200		
		Hold	Hz	≥300		
28	Convergence	14"	Center	mm	≤0.4	
			Sides	mm	≤1.1	
			Corners	mm	≤1.6	
		20", 21", 22"	Center	mm	≤0.4	
			Sides	mm	≤1.2	
			Corners	mm	≤1.8	
		25"	Center	mm	≤0.4	
			Sides	mm	≤1.5	
			Corners	mm	≤2.0	
		28", 29"	Center	mm	≤0.4	
			Sides	mm	≤1.7	
			Corners	mm	≤2.2	
29	Max. Brightness on Screen	14"	cd/m <sup>2</sup>	≥120(140)	Remark: ( ): for high transparent tube other: Black tube	
		20"	cd/m <sup>2</sup>	≥110(120)		
		21"	cd/m <sup>2</sup>	≥110(120)		
		25"	cd/m <sup>2</sup>	≥90		
		28"	cd/m <sup>2</sup>	≥90		
30	Range of Voltage Variation without affect picture		%	+10 / -20		
31	Stability of Anode Voltage		%	≤5		
32	Power Consumption	14"	W	≤60		
		20"	W	≤70		
		21"	W	≤75		
		22"	W	≤80		
		25"	W	≤110		
		28"	W	≤120		
		29"	W	≤130		
33	Noise-Limited Sensitivity of audio signal	VHF	μV	≤80	75Ω antenna, S/N= 30dB	
		UHF	μV	≤120	75Ω antenna, S/N= 30dB	

## General Specification of Electrical Properties

3/3

34	Effective power output for audio signal	14"	W	$\geq 120(140)$	THD = 7%	
		20"	W	$\geq 1.5(+1.5)$		
		21"	W	$\geq (2.0+2.0)$		
		25"	W	$\geq (6+6)$		
		28"	W	$\geq (6+6)$		
		29"	W	$\geq (6+6)$		
35	Frequency Response of Audio Channels	-3dB B/W	Hz	100 ~ 10K	Output = 0.25 (max. effective output) at 1kHz frequency	
		Deviation	dB	$\leq 5$		
36	Harmonic Distortion of Audio Channels		%	$\leq 10$	F = 100Hz ~ 8 kHz M = 100% (max. effective output)	
37	Noise Ratio of Audio Channels		dB	$\leq -40$	1. Sound modulation index = 100% 2. 75Ω antenna, S/N= 30dB 3. Max. Volume Position.	
38	Range of Remote Controlling	Direction	0 °	m	$\geq 8.5$	Nature Light : 200~400Lx Fluorescent Light: 150~250Lx Point the inverter fluorescent lamp at position same at the remote control to the IR sensor.
			$\pm 30$ °	m	$\geq 6.5$	
			$\pm 30$ °	m	$\geq 6.5$	
			0 ° with Interference	m	$\geq 2.5$	



## ALIGNMENT PROCEDURE

**SYSTEM: PAL, SECAM and NTSC (AV)**

**MODEL: 25" and 29" M2-Toshiba Chassis & Philips Chassis**

**ISSUE DATE: 30 July, 1998**

**VER 2.2**

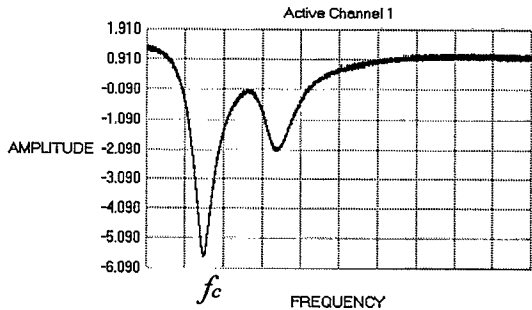
**Prepared by: Kwok Chun Wah**

## 1 Power Supply

- 1.1 The voltage of the B+ terminal is  $135V \pm 0.2V$  for 25" TV. For 29" TV the voltage of the B+ terminal is  $142 \pm 0.2V$ .
- 1.2 The voltage at pin 42 of the CPU should be 5V.

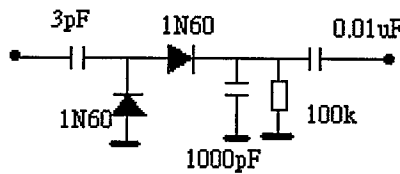
## 2 I.F. Amplifier

2.1 Adjustment of the attenuation of adjacent channel frequency:  
 Apply a sweep signal to the IF input. Observe the waveform at the Collector of Q101, using a detector with 3pF input capacitance. By tuning IF T101, minimize the signal level at  $f_c$ , refer to table 2.1. Found the IF frequency,  $f_p$  of the tuner in its specification and then according to table 2.1, adjust  $f_c$  to the correct value.



$f_p$ / MHz	$f_c$ / MHz
38.9	31.9
38	31.0
39.5	32.5
45.75	40.75

Table 2.1

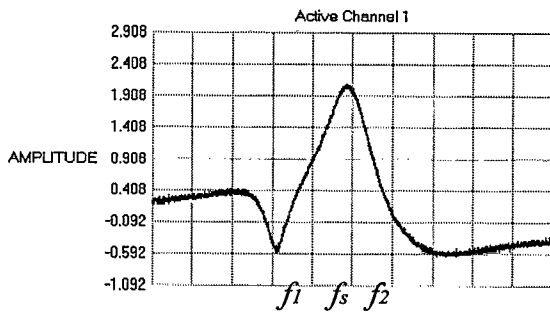


The detector circuit

2.2 Adjustment of sound IF:  
 Apply a sweep signal to the IF input. Observe the waveform at pin 8 of IC101, using a detector with 3pF input capacitor (the same as above). By tuning IF T108, adjust the signal level at  $f_s$  to maximum value, where  $f_s$  can be calculated by the following formula.

$$f_s = f_p - f_a$$

Where  $f_a$  is the audio frequency and it can be found in table 2.2



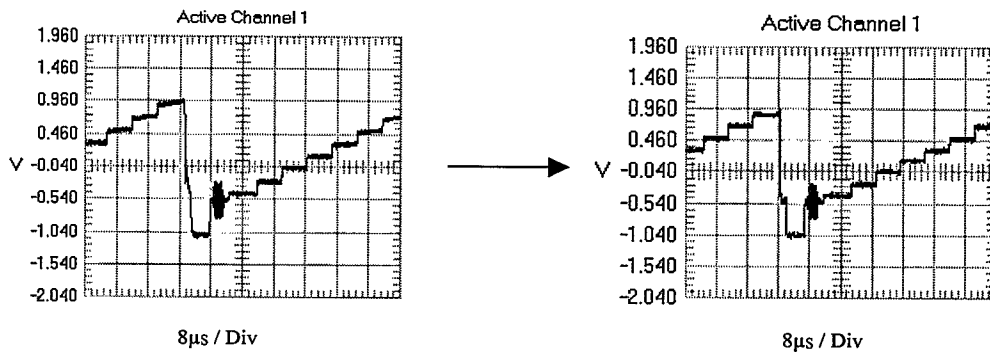
System	$f_a$ /MHz
BG	5.5
DK	6.5
I	6
M	4.5

Table 2.2

Note: if the TV had two or more sound systems, get the average value of  $f_a$   
 E.g. B/G+D/K system,  $f_a = 6\text{MHz}$

2.3 Adjustment of VCO:

Apply an IF signal (gray scale),  $f_p$  refer to the tuner specification, to the IF input. Observe the waveform at pin 21 of IC101. By tuning IF T105, make the black level most smooth.



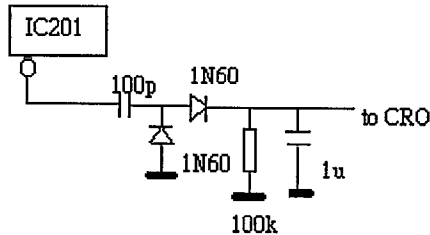
2.4 Adjustment of AFT:

Apply an IF signal,  $f_p$  refer to the tuner specification, (multi-burst & white field) to the IF input. Use a CRO to observe the waveform at pin 14 of IC101. Tuning IF T104 to minimize the ripple of the signal.



2.5 Adjustment of first sound IF:

Apply PAL IF signal (gray scale with audio), refer to table 2.5, to the IF input. Connect a detector to pin 24 of IC101. Observe the waveform with CRO. By tuning IF T106, maximize the AC voltage shown on the CRO.



Detector circuit

System	Audio carrier freq. /MHz
B/G	5.5
D/K	6.5
I	6
M	4.5

Table 2.5

Note: This procedure is optional for BG/DK with 38.9MHz IF frequency.

2.6 Adjustment of second sound IF:

Apply PAL IF signal (gray scale with audio), refer to table 2.5, to the IF input. The audio carrier must be modulated by a 1kHz signal with frequency deviation  $\pm 30$ kHz. Connect a multimeter and CRO to pin 1 of IC101. By tuning IF T103, adjust the DC voltage shown on the multimeter to  $6.3 \pm 0.1$ V and the CRO must display a maximum signal without distortion.

2.7 Adjustment of SAW filter matching coil (if provided):

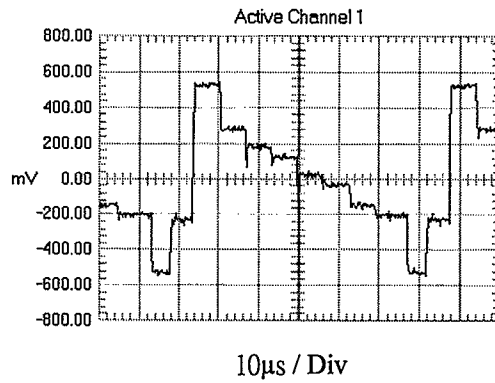
After complete the VCO and AFT alignment, apply an IF signal (multi burst and white field),  $f_p$  refer to the tuner specification, to the IF input. Connect a CRO to pin 21 of IC101 and observe the waveform of the output video signal. By tuning IF T102, adjust the amplitude of the multi burst signal so that it is equal to the white field signal.

3 VCD

3.1 PAL alignment procdures

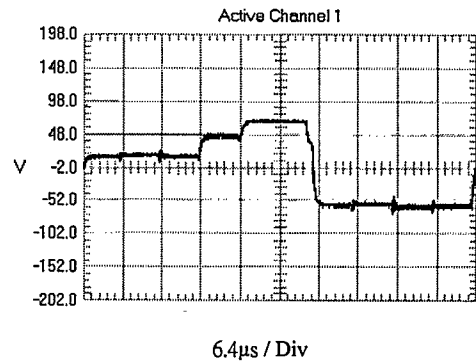
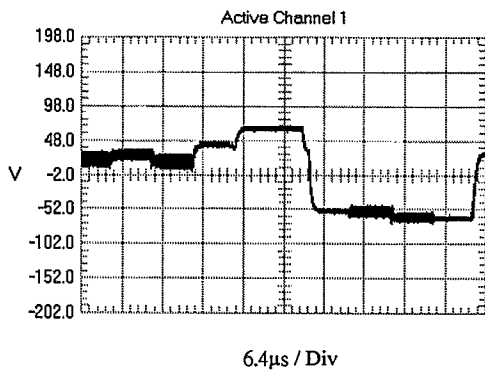
3.1.1 Absorption of color sub-carrier:

Input a PAL color bar signal. Observe the waveform at R206 and minimize the misalignment on the waveform by tuning T206 (minimize the level of color sub-carrier). Then change the channel to NTSC 3.58 and the absorption of the color carrier must be the same as the PAL channel. The waveform at R206 was shown bellow:



### 3.1.2 Adjustment of color demodulation:

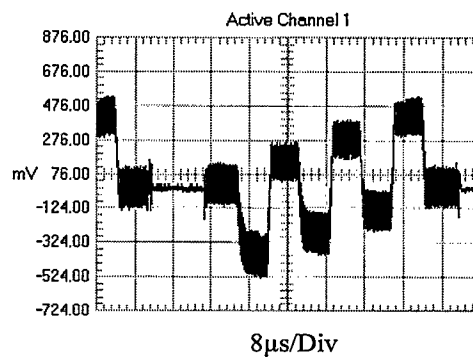
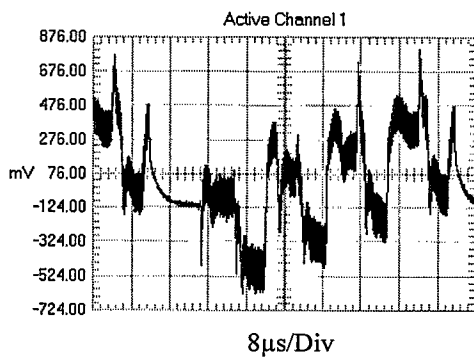
Select the PAL color bar, all analogue setting must be set to medium. Use a CRO to observe the waveform of the 'green cathode' terminal on the CRT board. By tuning VR203 and T203, minimize the mis-alignment of the waveform.



## 3.2 Secam alignment procedures

### 3.2.1 Bell filter

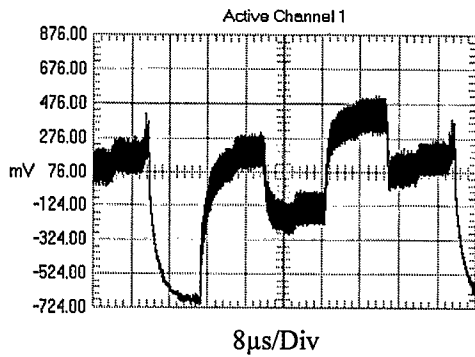
Select the SECAM color bar signal. Observe the waveform at pin 64 of IC201. Tuning IF T204 and get the correct waveform.



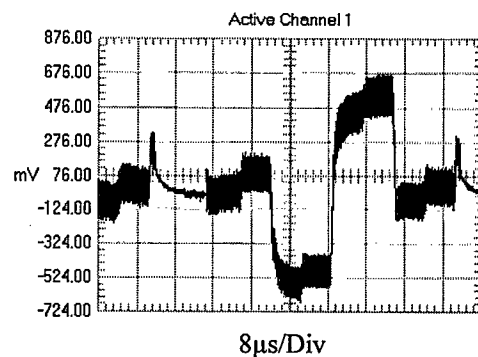
### 3.2.2 De-emphasis alignment

Receive the SECAM color pattern and observe the waveform at the pin 2 of IC201.

Adjust T202 to get the correct waveform.



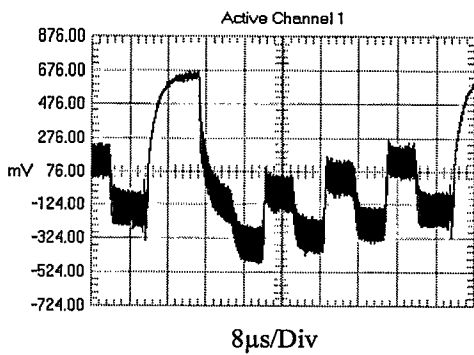
Waveform at IC201 pin2



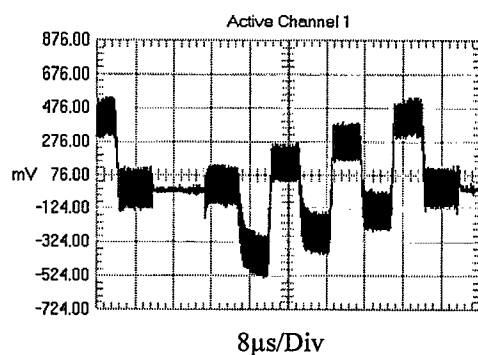
Waveform at IC201 pin2

Receive the SECAM color pattern and observe the waveform at the pin 64 of IC201.

Adjust T201 to get the correct waveform.



Waveform at IC201 pin64



Waveform at IC201 pin64

### 3.2.3 Ident signal adjustment

Apply SECAM color bar signal to the IF input, the amplitude of the signal is about 40dBµV. Then measure the DC voltage at pin 23 of IC 201. By adjust IF T205, maximize the DC voltage.

#### 4 Adjustment of RF-AGC

Select the gray scale signal with amplitude about 60dB $\mu$ V. Adjust VR101 until the noise at the left of the screen disappears.

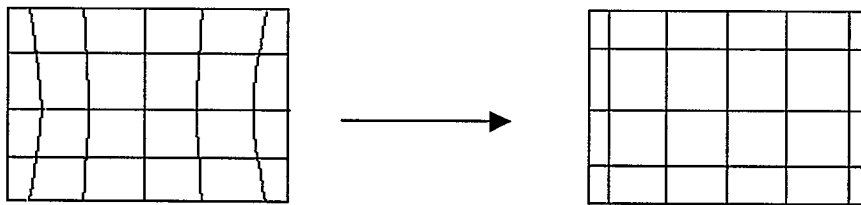
#### 5 On Screen Display Position Alignment

Select PAL standard testing signal. Press the 'Function' button on the remote control and the screen will display the OSD menu. Adjust the OSD menu to the center position by tuning T001.

Note: this procedure is not necessary for Philips chassis.

#### 6 Pincushion Distortion

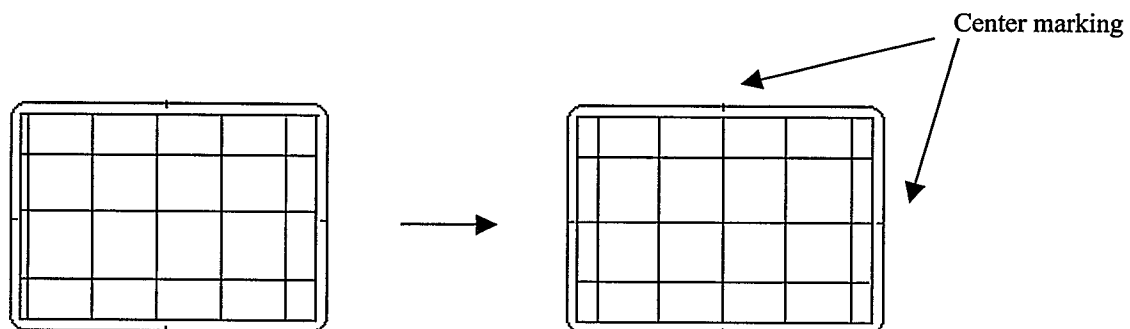
Receive a crosshatch pattern. The image at the left and right of the screen may have some distortion. By adjust VR1406, make the vertical lines become a straight line.



#### 7 Screen Alignment

##### 7.1 Center alignment:

Receive a center cross with border castellations pattern. Place the centerline (both vertical and horizontal) to the center marking of the CRT. The center of the screen can be adjusted by tuning VR315 (vertical) and VR401 (horizontal).



## 7.2 Screen size adjustment:

Receive a center cross with border castellations pattern. Adjust the screen size until the border was just disappearing on the screen. The screen size can be adjusted by tuning VR202 (60Hz vertical size), VR204 (50Hz vertical size) and VR1405 (horizontal size). The screen size is 90%-95% of the CRT size.

## 8 Focus alignment

Receive a center cross with border castellation pattern. Then adjust the 'focus' switch on the flyback transformer until the picture become the clearest.

## 9 Cut-off alignment

Set the value of VR555 (GDRV), VR557 (RCUT) and VR556 (BDRV) to middle and set VR558 (GCUT) and VR559 (BCUT) to fully clockwise. Then turn the switch S201 to the service side and a line appear on the screen. Adjust the 'screen' switch on the flyback transformer to set the intensity of the line to a minimum level (a level where the line is just appears). Then adjust VR557 until the line become a red line. By adjusting VR558 and VR559, change the red line to a white line.

## 10 White Balance

- a. Receive a black and white pattern.
- b. Use a CRT color analyzer to measure the black side of the screen. By adjusting VR558 and VR559, set the reading of the color analyzer to  $x=281$ ,  $y=311$ .
- c. Then measure the white side of the screen. By adjusting VR555 and VR556, set the reading of the color analyzer to  $x=281$ ,  $y=311$ .
- d. Then repeat step 'a' and 'b' until you can get the correct reading for both black and white sides.

## 11 Sub-brightness Alignment

Receive a gray scale pattern, set the contrast, brightness and color to center. Then adjust VR206 so that the brightness of the first and second step have a little difference.

DATE:	21 / 08 / 97	BILLS OF MATERIALS	
CUSTOMER:	TEAC		
MODEL NO.:	EC 2988 / CT-M689ST		
BOM NO.:	03-2988MD-A34		
SYSTEM:	PAL SECAM BG DK NTSC PLAYBACK CABLE TUNER GERMAN		
	STEREO 8 PAGE TELETEXT BUILT-IN WOOFER AV IN / OUT 50P		
Assembly	Parts	Description	Location
<b>08-261770-001</b>	<b>ASS'Y - DPC BOARD</b>		
08-261770-001	10-1N4148-AB1	DIODE 1N4148 (SWITCHING)	D1401
08-261770-001	10-79C12V-DB1	DIODE ZENER 12V 1/2W 5%	D1403
08-261770-001	10-79C12V-DB1	DIODE ZENER 12V 1/2W 5%	D1404
08-261770-001	11-SA1015-YB1	TRANSISTOR 2SA1015Y	Q1404
08-261770-001	11-SC1815-YB1	TRANSISTOR 2SC1815Y	Q1405
08-261770-001	11-SC1815-YB1	TRANSISTOR 2SC1815Y	Q1406
08-261770-001	11-SC1815-YB1	TRANSISTOR 2SC1815Y	Q1407
08-261770-001	11-SC1815-YB1	TRANSISTOR 2SC1815Y	Q1408
08-261770-001	11-SD1499-QA1	TRANSISTOR 2SD1499Q (POWER)	Q1403
08-261770-001	18-CB0102-JNX	RES. C.F. 1K OHM 1/6W +/-5%	R1442
08-261770-001	18-CB0102-JNX	RES. C.F. 1K OHM 1/6W +/-5%	R1445
08-261770-001	18-CB0102-JNX	RES. C.F. 1K OHM 1/6W +/-5%	R1447
08-261770-001	18-CB0103-JNX	RES. C.F. 10K OHM 1/6W +/-5%	R1440
08-261770-001	18-CB0122-JNX	RES. C.F. 1.2K OHM 1/6W +/-5%	R1435
08-261770-001	18-CB0122-JNX	RES. C.F. 1.2K OHM 1/6W +/-5%	R1467
08-261770-001	18-CB0152-JNX	RES. C.F. 1.5K OHM 1/6W +/-5%	R1444
08-261770-001	18-CB0183-JNX	RES. C.F. 18K OHM 1/6W +/-5%	R1434
08-261770-001	18-CB0222-JNX	RES. C.F. 2.2K OHM 1/6W +/-5%	R1437
08-261770-001	18-CB0222-JNX	RES. C.F. 2.2K OHM 1/6W +/-5%	R1446
08-261770-001	18-CB0222-JNX	RES. C.F. 2.2K OHM 1/6W +/-5%	R1461
08-261770-001	18-CB0223-JNX	RES. C.F. 22K OHM 1/6W +/-5%	R1466
08-261770-001	18-CB0272-JNX	RES. C.F. 2.7K OHM 1/6W +/-5%	R1458
08-261770-001	18-CB0274-JNX	RES. C.F. 270K OHM 1/6W +/-5%	R1441
08-261770-001	18-CB0274-JNX	RES. C.F. 270K OHM 1/6W +/-5%	R1460
08-261770-001	18-CB0333-JNX	RES. C.F. 33K OHM 1/6W +/-5%	R1438
08-261770-001	18-CB0392-JNX	RES. C.F. 3.9K OHM 1/6W +/-5%	R1449
08-261770-001	18-CB0393-JNX	RES. C.F. 39K OHM 1/6W +/-5%	R1450
08-261770-001	18-CB0473-JNX	RES. C.F. 47K OHM 1/6W +/-5%	R1457
08-261770-001	18-CB0473-JNX	RES. C.F. 47K OHM 1/6W +/-5%	R1459
08-261770-001	18-CB0752-JNX	RES. C.F. 7.5K OHM 1/6W +/-5%	R1448
08-261770-001	18-CD0122-JNX	RES. C.F. 1.2K OHM 1/4W +/-5%	R1453
08-261770-001	18-CD0222-JNX	RES. C.F. 2.2K OHM 1/4W +/-5%	R1452
08-261770-001	18-CD0392-JNX	RES. C.F. 3.9K OHM 1/4W +/-5%	R1431
08-261770-001	18-DD0183-FN1	RES. M.F. 18K OHM 1/4W +/-1%	R1443
08-261770-001	18-DD0184-FN1	RES. M.F. 180K OHM 1/4W +/-1%	R1439
08-261770-001	18-FE0121-JXX	RES. M.O. 120 OHM 1/2W +/-5%	R1432
08-261770-001	18-FG0339-JH1	RES. M.O. 3.3 OHM 2W +/-5%	R1430
08-261770-001	20-141630-502	TRIMMER B5K VERT TYPE	VR1405
08-261770-001	20-201260-203	TRIMMER B20K VERT TYPE	VR1406
08-261770-001	25-264610-M11	CAP. ELEC 4.7UF 50V +/-20% NP	C1451
08-261770-001	25-BEA471-M11	CAP. ELEC 470 UF 35V +/-20%	C1454
08-261770-001	25-BEB101-M11	CAP. ELEC 100 UF 35V +/-20%	C1452
08-261770-001	25-BEB470-M11	CAP. ELEC 47UF 35V +/-20%	C1453
08-261770-001	25-BFB479-M11	CAP. ELEC 4.7 UF 50V +/-20%	C1460
08-261770-001	25-FEB330-M11	CAP. ELEC 33 UF 35V +/-20% N.P	C1457
08-261770-001	25-FEB330-M11	CAP. ELEC 33 UF 35V +/-20% N.P	C1458
08-261770-001	27-PBC104-J01	CAP. P.E. 0.1 UF 50V +/-5%	C1455
08-261770-001	27-PBC104-J01	CAP. P.E. 0.1 UF 50V +/-5%	C1456
08-261770-001	36-264520-008	COIL LINEARITY 800 UH	L1405

Assembly	Parts	Description	Location
08-261770-001	40-262751-0AE	P.C.B. DPC BD	
08-261770-001	41-WJ0075-B00	WIRE BARE JUMPER 7.5MM	J1401A
08-261770-001	41-WJ0075-B00	WIRE BARE JUMPER 7.5MM	J1402
08-261770-001	41-WJ0075-B00	WIRE BARE JUMPER 7.5MM	J1403
08-261770-001	41-WJ0075-B00	WIRE BARE JUMPER 7.5MM	J1405
08-261770-001	46-21550W-037	HEADER *3 TS3B-SQ-1	
08-261770-001	63-B3508H-0B4	S/T SCREW B 3.5 X 8 B HARD	
08-261770-001	64-P3010X-104	M/C SCREW P 3 X 10	
08-261770-001	65-Z3005X-23M	NUT M 3	
08-261770-001	67-229340-2A0	HEAT SINK DPC	
08-261770-001	99-217425-00X	UL ELEC. TAPE 19(W) X 50(L)MM	
<b>08-264250-002</b>	<b>ASS'Y - STEREO PARTS</b>		
08-264250-002	10-79C5V1-DB1	DIODE ZENER 5.1V 1/2W 5%	D603
08-264250-002	11-SA1015-YB1	TRANSISTOR 2SA1015Y	Q602
08-264250-002	13-0TDA84-15P	IC TDA8415	IC604
08-264250-002	13-0TDA98-21P	IC TDA9821	IC603
08-264250-002	18-CB0102-JNX	RES. C.F. 1K OHM 1/6W +/-5%	R624
08-264250-002	18-CB0103-JNX	RES. C.F. 10K OHM 1/6W +/-5%	R633
08-264250-002	18-CB0122-JNX	RES. C.F. 1.2K OHM 1/6W +/-5%	R626
08-264250-002	18-CB0122-JNX	RES. C.F. 1.2K OHM 1/6W +/-5%	R627
08-264250-002	18-CB0150-JNX	RES. C.F. 15 OHM 1/6W +/-5%	R630
08-264250-002	18-CB0221-JNX	RES. C.F. 220 OHM 1/6W +/-5%	R628
08-264250-002	18-CB0221-JNX	RES. C.F. 220 OHM 1/6W +/-5%	R629
08-264250-002	18-CB0224-JNX	RES. C.F. 220K OHM 1/6W +/-5%	R632
08-264250-002	18-CB0273-JNX	RES. C.F. 27K OHM 1/6W +/-5%	R625
08-264250-002	18-CB0331-JNX	RES. C.F. 330 OHM 1/6W +/-5%	R622
08-264250-002	18-CB0331-JNX	RES. C.F. 330 OHM 1/6W +/-5%	R623
08-264250-002	18-CB0472-JNX	RES. C.F. 4.7K OHM 1/6W +/-5%	R631
08-264250-002	18-FF0101-JGX	RES. M.O. 100 OHM 1W +/-5%	R634
08-264250-002	20-202990-502	TRIMMER B5K HORIZ TYPE	VR601
08-264250-002	25-BCA221-M11	CAP. ELEC 220 UF 16V +/-20%	C632
08-264250-002	25-BCB100-M11	CAP. ELEC 10 UF 16V +/-20%	C639
08-264250-002	25-BCB229-M11	CAP. ELEC 2.2 UF 16V +/-20%	C641
08-264250-002	25-BCB229-M11	CAP. ELEC 2.2 UF 16V +/-20%	C633
08-264250-002	25-BCB229-M11	CAP. ELEC 2.2 UF 16V +/-20%	C634
08-264250-002	25-BCB229-M11	CAP. ELEC 2.2 UF 16V +/-20%	C635
08-264250-002	25-BCB229-M11	CAP. ELEC 2.2 UF 16V +/-20%	C636
08-264250-002	25-BCB229-M11	CAP. ELEC 2.2 UF 16V +/-20%	C637
08-264250-002	26-ABC103-ZFX	CAP. CER 0.01 UF 50V +80-20% F	C640
08-264250-002	26-ABC223-ZFX	CAP. CER 0.022UF 50V +80-20% F	C631
08-264250-002	27-MBC224-J01	CAP. M. P.E. 0.22 UF 50V +/-5%	C638
08-264250-002	34-R120J2-0EX	COIL PL - 12 UH +/-5%	L601
08-264250-002	45-107741-401	CER. FILTER 6.5MHZ	Z603
08-264250-002	45-228590-100	CRYSTAL 10MHZ	X601
08-264250-002	45-269230-40H	CERAMIC FILTER SFT5.74MA	Z601
08-264250-002	45-269240-40H	CERAMIC FILTER SFT5.5MA	Z602
<b>08-270340-002</b>	<b>ASS'Y - BAZOOKA HOLDER</b>		
08-270340-002	42-246360-006	SPEAKER 11.4CM 8 OHM 15W	
08-270340-002	62-240940-0HA	BAZOOKA HOLDER A	
08-270340-002	62-240950-0HA	BAZOOKA HOLDER B	
08-270340-002	63-P3014X-AB4	S/T SCREW P 3 X 14 AB	
08-270340-002	63-P3014X-BT4	S/T SCREW P 3 X 14 BT	
08-270340-002	65-A40090-06E	WASHER 4 X 9 X 0.6 MM	
08-270340-002	71-247820-0A0	LABEL FOR WOOFER (BLACK)	
08-274690-001	02-274410-001	IR RECEIVER MODULE SBX8031-F	

Assembly	Parts	Description	Location
08-274690-001	40-274000-0DB	P.C.B IR PREAMP BD (25&29)	
08-274690-001	41-AJ0060-BEE	WIRE BARE JUMPER 6MM	J01301
08-274690-001	67-235880-1T0	SHIELD CAN - IR PRE-AMP	
<b>08-275151-001</b>	<b>ASS'Y - MAIN BOARD</b>		
08-275151-001	07-2900KK-C3X	TUNER 2900KKC-3X1784 (CABLE)	TU101
08-275151-001	10-0FR104-EB1	DIODE FR104 (FAST RECOVERY)	D407A
08-275151-001	10-0FR104-EB1	DIODE FR104 (FAST RECOVERY)	D401
08-275151-001	10-0FR104-EB1	DIODE FR104 (FAST RECOVERY)	D421
08-275151-001	10-0FR105-EB1	DIODE FR105 (FAST RECOVERY)	D403
08-275151-001	10-0RS3FS-E01	DIODE RS3FS (FAST RECOVERY)	D422
08-275151-001	10-1N4001-EB1	DIODE 1N4001 (RECTIFIER)	D301
08-275151-001	10-1N4148-AB1	DIODE 1N4148 (SWITCHING)	D602
08-275151-001	10-1N4148-AB1	DIODE 1N4148 (SWITCHING)	D601
08-275151-001	10-1N4148-AB1	DIODE 1N4148 (SWITCHING)	D316
08-275151-001	10-1N4148-AB1	DIODE 1N4148 (SWITCHING)	D01
08-275151-001	10-1N4148-AB1	DIODE 1N4148 (SWITCHING)	D02
08-275151-001	10-1N4148-AB1	DIODE 1N4148 (SWITCHING)	D03
08-275151-001	10-1N4148-AB1	DIODE 1N4148 (SWITCHING)	D04
08-275151-001	10-1N4148-AB1	DIODE 1N4148 (SWITCHING)	D008
08-275151-001	10-1N4148-AB1	DIODE 1N4148 (SWITCHING)	D011
08-275151-001	10-1N4148-AB1	DIODE 1N4148 (SWITCHING)	D010
08-275151-001	10-1N4148-AB1	DIODE 1N4148 (SWITCHING)	D012
08-275151-001	10-1N4148-AB1	DIODE 1N4148 (SWITCHING)	D013
08-275151-001	10-1N4148-AB1	DIODE 1N4148 (SWITCHING)	D206
08-275151-001	10-1N4148-AB1	DIODE 1N4148 (SWITCHING)	D014
08-275151-001	10-1N4148-AB1	DIODE 1N4148 (SWITCHING)	D006
08-275151-001	10-1N4148-AB1	DIODE 1N4148 (SWITCHING)	D007
08-275151-001	10-1N4148-AB1	DIODE 1N4148 (SWITCHING)	D201
08-275151-001	10-1N4148-AB1	DIODE 1N4148 (SWITCHING)	D222
08-275151-001	10-79B5V6-DB1	DIODE ZENER 5.6V 1/2W 2%	D210
08-275151-001	10-79C12V-DB1	DIODE ZENER 12V 1/2W 5%	D407
08-275151-001	10-79C20V-DB1	DIODE ZENER 20V 1/2W 5%	D432
08-275151-001	10-79C5V1-DB1	DIODE ZENER 5.1V 1/2W 5%	D834A
08-275151-001	10-79C5V6-DB1	DIODE ZENER 5.6V 1/2W 5%	D901
08-275151-001	10-79C6V2-DB1	DIODE ZENER 6.2V 1/2W 5%	D211
08-275151-001	10-79C7V5-DB1	DIODE ZENER 7.5V 1/2W 5%	D208
08-275151-001	10-79C9V1-DB1	DIODE ZENER 9.1V 1/2W 5%	D217
08-275151-001	10-HZ9LA3-DB1	DIODE ZENER 8.1V-8.5V 1/2W	D433
08-275151-001	10-PC574J-DJ1	DIODE ZENER UPC 574J	D004
08-275151-001	11-0BC558-0B1	TRANSISTOR BC558	Q210
08-275151-001	11-0BC558-0B1	TRANSISTOR BC558	Q211
08-275151-001	11-2N3904-0B1	TRANSISTOR 2N3904	Q007
08-275151-001	11-SA1015-YB1	TRANSISTOR 2SA1015Y	Q811A
08-275151-001	11-SA1015-YB1	TRANSISTOR 2SA1015Y	Q903
08-275151-001	11-SA1015-YB1	TRANSISTOR 2SA1015Y	Q203
08-275151-001	11-SA1015-YB1	TRANSISTOR 2SA1015Y	Q204
08-275151-001	11-SC1815-YB1	TRANSISTOR 2SC1815Y	Q901
08-275151-001	11-SC1815-YB1	TRANSISTOR 2SC1815Y	Q902
08-275151-001	11-SC1815-YB1	TRANSISTOR 2SC1815Y	Q904
08-275151-001	11-SC1815-YB1	TRANSISTOR 2SC1815Y	Q905
08-275151-001	11-SC1815-YB1	TRANSISTOR 2SC1815Y	Q906
08-275151-001	11-SC1815-YB1	TRANSISTOR 2SC1815Y	Q201
08-275151-001	11-SC1815-YB1	TRANSISTOR 2SC1815Y	Q601
08-275151-001	11-SC1815-YB1	TRANSISTOR 2SC1815Y	Q207
08-275151-001	11-SC1815-YB1	TRANSISTOR 2SC1815Y	Q202
08-275151-001	11-SC1815-YB1	TRANSISTOR 2SC1815Y	Q001



Assembly	Parts	Description	Location
08-275151-001	11-SC1815-YB1	TRANSISTOR 2SC1815Y	Q002
08-275151-001	11-SC1815-YB1	TRANSISTOR 2SC1815Y	Q008
08-275151-001	11-SC1815-YB1	TRANSISTOR 2SC1815Y	Q006
08-275151-001	11-SC1815-YB1	TRANSISTOR 2SC1815Y	Q12
08-275151-001	11-SC1815-YB1	TRANSISTOR 2SC1815Y	Q13
08-275151-001	11-SC2230-YB1	TRANSISTOR 2SC2230Y	Q810A
08-275151-001	11-SC4544-0A1	TRANSISTOR 2SC4544	Q411
08-275151-001	11-SD2539-0A1	TRANSISTOR 2SD2539	Q421
08-275151-001	11-TC144E-SB1	TRANSISTOR DTC144ES (TP)	Q208
08-275151-001	11-TC144E-SB1	TRANSISTOR DTC144ES (TP)	Q604
08-275151-001	11-TC144E-SB1	TRANSISTOR DTC144ES (TP)	Q01
08-275151-001	11-TC144E-SB1	TRANSISTOR DTC144ES (TP)	Q213
08-275151-001	11-TC144E-SB1	TRANSISTOR DTC144ES (TP)	Q212
08-275151-001	11-TC144E-SB1	TRANSISTOR DTC144ES (TP)	Q205
08-275151-001	11-TC144E-SB1	TRANSISTOR DTC144ES (TP)	Q206
08-275151-001	13-000040-53P	IC 4053 (ANALOG SW)	IC901
08-275151-001	13-00LA78-33S	IC LA7833	IC301
08-275151-001	13-0DBL20-44S	IC DBL2044(BAND SELECT)	IC103
08-275151-001	13-0TA763-0PP	IC TA7630P (DC VOL.CONT.)	IC602
08-275151-001	13-P47C83-4AP	IC TMP47C834N-LK-5140M2A(RB11)	IC001
08-275151-001	13-ST24C0-2FP	IC ST24C02FB6 EEPROM 2K	IC002
08-275151-001	13-TA8759-BNP	IC TA8759BN	IC201
08-275151-001	13-TDA200-9AS	IC TDA2009A (AUDIO O/P)	IC601
08-275151-001	18-CB0101-JNX	RES. C.F. 100 OHM 1/6W +/-5%	R901
08-275151-001	18-CB0101-JNX	RES. C.F. 100 OHM 1/6W +/-5%	R903
08-275151-001	18-CB0101-JNX	RES. C.F. 100 OHM 1/6W +/-5%	R045
08-275151-001	18-CB0102-JNX	RES. C.F. 1K OHM 1/6W +/-5%	J260
08-275151-001	18-CB0102-JNX	RES. C.F. 1K OHM 1/6W +/-5%	R834A
08-275151-001	18-CB0102-JNX	RES. C.F. 1K OHM 1/6W +/-5%	R904
08-275151-001	18-CB0102-JNX	RES. C.F. 1K OHM 1/6W +/-5%	R910
08-275151-001	18-CB0102-JNX	RES. C.F. 1K OHM 1/6W +/-5%	R921
08-275151-001	18-CB0102-JNX	RES. C.F. 1K OHM 1/6W +/-5%	R922
08-275151-001	18-CB0102-JNX	RES. C.F. 1K OHM 1/6W +/-5%	R210
08-275151-001	18-CB0102-JNX	RES. C.F. 1K OHM 1/6W +/-5%	R321
08-275151-001	18-CB0102-JNX	RES. C.F. 1K OHM 1/6W +/-5%	R324
08-275151-001	18-CB0102-JNX	RES. C.F. 1K OHM 1/6W +/-5%	R604
08-275151-001	18-CB0102-JNX	RES. C.F. 1K OHM 1/6W +/-5%	R606
08-275151-001	18-CB0102-JNX	RES. C.F. 1K OHM 1/6W +/-5%	R220
08-275151-001	18-CB0102-JNX	RES. C.F. 1K OHM 1/6W +/-5%	R215
08-275151-001	18-CB0102-JNX	RES. C.F. 1K OHM 1/6W +/-5%	R280
08-275151-001	18-CB0102-JNX	RES. C.F. 1K OHM 1/6W +/-5%	R043
08-275151-001	18-CB0102-JNX	RES. C.F. 1K OHM 1/6W +/-5%	R209
08-275151-001	18-CB0103-JNX	RES. C.F. 10K OHM 1/6W +/-5%	R836A
08-275151-001	18-CB0103-JNX	RES. C.F. 10K OHM 1/6W +/-5%	R613
08-275151-001	18-CB0103-JNX	RES. C.F. 10K OHM 1/6W +/-5%	R615
08-275151-001	18-CB0103-JNX	RES. C.F. 10K OHM 1/6W +/-5%	R616
08-275151-001	18-CB0103-JNX	RES. C.F. 10K OHM 1/6W +/-5%	R614
08-275151-001	18-CB0103-JNX	RES. C.F. 10K OHM 1/6W +/-5%	R618
08-275151-001	18-CB0103-JNX	RES. C.F. 10K OHM 1/6W +/-5%	R620
08-275151-001	18-CB0103-JNX	RES. C.F. 10K OHM 1/6W +/-5%	R403
08-275151-001	18-CB0103-JNX	RES. C.F. 10K OHM 1/6W +/-5%	R404
08-275151-001	18-CB0103-JNX	RES. C.F. 10K OHM 1/6W +/-5%	R248
08-275151-001	18-CB0103-JNX	RES. C.F. 10K OHM 1/6W +/-5%	R036
08-275151-001	18-CB0103-JNX	RES. C.F. 10K OHM 1/6W +/-5%	R249
08-275151-001	18-CB0103-JNX	RES. C.F. 10K OHM 1/6W +/-5%	R165
08-275151-001	18-CB0103-JNX	RES. C.F. 10K OHM 1/6W +/-5%	R044
08-275151-001	18-CB0103-JNX	RES. C.F. 10K OHM 1/6W +/-5%	R034

Assembly	Parts	Description	Location
08-275151-001	18-CB0103-JNX	RES. C.F. 10K OHM 1/6W +/-5%	R279
08-275151-001	18-CB0103-JNX	RES. C.F. 10K OHM 1/6W +/-5%	R007
08-275151-001	18-CB0103-JNX	RES. C.F. 10K OHM 1/6W +/-5%	R049
08-275151-001	18-CB0103-JNX	RES. C.F. 10K OHM 1/6W +/-5%	R051
08-275151-001	18-CB0103-JNX	RES. C.F. 10K OHM 1/6W +/-5%	R056
08-275151-001	18-CB0103-JNX	RES. C.F. 10K OHM 1/6W +/-5%	R064
08-275151-001	18-CB0103-JNX	RES. C.F. 10K OHM 1/6W +/-5%	R290
08-275151-001	18-CB0103-JNX	RES. C.F. 10K OHM 1/6W +/-5%	R293
08-275151-001	18-CB0103-JNX	RES. C.F. 10K OHM 1/6W +/-5%	R050
08-275151-001	18-CB0103-JNX	RES. C.F. 10K OHM 1/6W +/-5%	R055
08-275151-001	18-CB0103-JNX	RES. C.F. 10K OHM 1/6W +/-5%	R260
08-275151-001	18-CB0103-JNX	RES. C.F. 10K OHM 1/6W +/-5%	R003
08-275151-001	18-CB0103-JNX	RES. C.F. 10K OHM 1/6W +/-5%	R001
08-275151-001	18-CB0103-JNX	RES. C.F. 10K OHM 1/6W +/-5%	R054
08-275151-001	18-CB0103-JNX	RES. C.F. 10K OHM 1/6W +/-5%	R295
08-275151-001	18-CB0104-JNX	RES. C.F. 100K OHM 1/6W +/-5%	R835A
08-275151-001	18-CB0104-JNX	RES. C.F. 100K OHM 1/6W +/-5%	R039
08-275151-001	18-CB0104-JNX	RES. C.F. 100K OHM 1/6W +/-5%	R124
08-275151-001	18-CB0104-JNX	RES. C.F. 100K OHM 1/6W +/-5%	R002
08-275151-001	18-CB0104-JNX	RES. C.F. 100K OHM 1/6W +/-5%	R004
08-275151-001	18-CB0105-JNX	RES. C.F. 1M OHM 1/6W +/-5%	R304
08-275151-001	18-CB0105-JNX	RES. C.F. 1M OHM 1/6W +/-5%	R381
08-275151-001	18-CB0105-JNX	RES. C.F. 1M OHM 1/6W +/-5%	R163
08-275151-001	18-CB0105-JNX	RES. C.F. 1M OHM 1/6W +/-5%	R164
08-275151-001	18-CB0109-JNX	RES. C.F. 1 OHM 1/6W +/-5%	R602
08-275151-001	18-CB0109-JNX	RES. C.F. 1 OHM 1/6W +/-5%	R603
08-275151-001	18-CB0121-JNX	RES. C.F. 120 OHM 1/6W +/-5%	R228
08-275151-001	18-CB0122-JNX	RES. C.F. 1.2K OHM 1/6W +/-5%	R266
08-275151-001	18-CB0122-JNX	RES. C.F. 1.2K OHM 1/6W +/-5%	R208
08-275151-001	18-CB0123-JNX	RES. C.F. 12K OHM 1/6W +/-5%	R032
08-275151-001	18-CB0123-JNX	RES. C.F. 12K OHM 1/6W +/-5%	R038
08-275151-001	18-CB0123-JNX	RES. C.F. 12K OHM 1/6W +/-5%	R029
08-275151-001	18-CB0123-JNX	RES. C.F. 12K OHM 1/6W +/-5%	R253
08-275151-001	18-CB0151-JNX	RES. C.F. 150 OHM 1/6W +/-5%	R234
08-275151-001	18-CB0151-JNX	RES. C.F. 150 OHM 1/6W +/-5%	R233
08-275151-001	18-CB0152-JNX	RES. C.F. 1.5K OHM 1/6W +/-5%	R273
08-275151-001	18-CB0152-JNX	RES. C.F. 1.5K OHM 1/6W +/-5%	R272
08-275151-001	18-CB0152-JNX	RES. C.F. 1.5K OHM 1/6W +/-5%	R023
08-275151-001	18-CB0152-JNX	RES. C.F. 1.5K OHM 1/6W +/-5%	R231
08-275151-001	18-CB0153-JNX	RES. C.F. 15K OHM 1/6W +/-5%	R499
08-275151-001	18-CB0153-JNX	RES. C.F. 15K OHM 1/6W +/-5%	R035
08-275151-001	18-CB0153-JNX	RES. C.F. 15K OHM 1/6W +/-5%	R030
08-275151-001	18-CB0153-JNX	RES. C.F. 15K OHM 1/6W +/-5%	R021
08-275151-001	18-CB0153-JNX	RES. C.F. 15K OHM 1/6W +/-5%	R018
08-275151-001	18-CB0154-JNX	RES. C.F. 150K OHM 1/6W +/-5%	R608
08-275151-001	18-CB0154-JNX	RES. C.F. 150K OHM 1/6W +/-5%	R609
08-275151-001	18-CB0155-JNX	RES. C.F. 1.5M OHM 1/6W +/-5%	R270
08-275151-001	18-CB0181-JNX	RES. C.F. 180 OHM 1/6W +/-5%	R218
08-275151-001	18-CB0182-JNX	RES. C.F. 1.8K OHM 1/6W +/-5%	R205
08-275151-001	18-CB0182-JNX	RES. C.F. 1.8K OHM 1/6W +/-5%	R292
08-275151-001	18-CB0182-JNX	RES. C.F. 1.8K OHM 1/6W +/-5%	R206
08-275151-001	18-CB0182-JNX	RES. C.F. 1.8K OHM 1/6W +/-5%	R217
08-275151-001	18-CB0183-JNX	RES. C.F. 18K OHM 1/6W +/-5%	R028
08-275151-001	18-CB0184-JNX	RES. C.F. 180K OHM 1/6W +/-5%	R254
08-275151-001	18-CB0185-JNX	RES. C.F. 1.8M OHM 1/6W +/-5%	R268
08-275151-001	18-CB0202-JNX	RES. C.F. 2K OHM 1/6W +/-5%	R252
08-275151-001	18-CB0220-JNX	RES. C.F. 22 OHM 1/6W +/-5%	R14

Assembly	Parts	Description	Location
08-275151-001	18-CB0220-JNX	RES. C.F. 22 OHM 1/6W +/-5%	R15
08-275151-001	18-CB0220-JNX	RES. C.F. 22 OHM 1/6W +/-5%	R16
08-275151-001	18-CB0221-JNX	RES. C.F. 220 OHM 1/6W +/-5%	R447
08-275151-001	18-CB0221-JNX	RES. C.F. 220 OHM 1/6W +/-5%	R262
08-275151-001	18-CB0221-JNX	RES. C.F. 220 OHM 1/6W +/-5%	R005
08-275151-001	18-CB0222-JNX	RES. C.F. 2.2K OHM 1/6W +/-5%	R924
08-275151-001	18-CB0222-JNX	RES. C.F. 2.2K OHM 1/6W +/-5%	R925
08-275151-001	18-CB0222-JNX	RES. C.F. 2.2K OHM 1/6W +/-5%	R911
08-275151-001	18-CB0222-JNX	RES. C.F. 2.2K OHM 1/6W +/-5%	R212
08-275151-001	18-CB0222-JNX	RES. C.F. 2.2K OHM 1/6W +/-5%	R213
08-275151-001	18-CB0223-JNX	RES. C.F. 22K OHM 1/6W +/-5%	R01
08-275151-001	18-CB0223-JNX	RES. C.F. 22K OHM 1/6W +/-5%	R261
08-275151-001	18-CB0223-JNX	RES. C.F. 22K OHM 1/6W +/-5%	R042
08-275151-001	18-CB0223-JNX	RES. C.F. 22K OHM 1/6W +/-5%	R263
08-275151-001	18-CB0223-JNX	RES. C.F. 22K OHM 1/6W +/-5%	R014
08-275151-001	18-CB0224-JNX	RES. C.F. 220K OHM 1/6W +/-5%	R905
08-275151-001	18-CB0224-JNX	RES. C.F. 220K OHM 1/6W +/-5%	R906
08-275151-001	18-CB0242-JNX	RES. C.F. 2.4K OHM 1/6W +/-5%	R410
08-275151-001	18-CB0271-JNX	RES. C.F. 270 OHM 1/6W +/-5%	R221
08-275151-001	18-CB0271-JNX	RES. C.F. 270 OHM 1/6W +/-5%	R222
08-275151-001	18-CB0271-JNX	RES. C.F. 270 OHM 1/6W +/-5%	R223
08-275151-001	18-CB0272-JNX	RES. C.F. 2.7K OHM 1/6W +/-5%	R255
08-275151-001	18-CB0273-JNX	RES. C.F. 27K OHM 1/6W +/-5%	R235
08-275151-001	18-CB0274-JNX	RES. C.F. 270K OHM 1/6W +/-5%	R236
08-275151-001	18-CB0274-JNX	RES. C.F. 270K OHM 1/6W +/-5%	R274
08-275151-001	18-CB0302-JNX	RES. C.F. 3K OHM 1/6W +/-5%	R240
08-275151-001	18-CB0330-JNX	RES. C.F. 33 OHM 1/6W +/-5%	R605
08-275151-001	18-CB0330-JNX	RES. C.F. 33 OHM 1/6W +/-5%	R607
08-275151-001	18-CB0331-JNX	RES. C.F. 330 OHM 1/6W +/-5%	R915
08-275151-001	18-CB0331-JNX	RES. C.F. 330 OHM 1/6W +/-5%	R923
08-275151-001	18-CB0331-JNX	RES. C.F. 330 OHM 1/6W +/-5%	R912
08-275151-001	18-CB0331-JNX	RES. C.F. 330 OHM 1/6W +/-5%	R916
08-275151-001	18-CB0331-JNX	RES. C.F. 330 OHM 1/6W +/-5%	R281
08-275151-001	18-CB0331-JNX	RES. C.F. 330 OHM 1/6W +/-5%	R636
08-275151-001	18-CB0331-JNX	RES. C.F. 330 OHM 1/6W +/-5%	R446
08-275151-001	18-CB0332-JNX	RES. C.F. 3.3K OHM 1/6W +/-5%	R323
08-275151-001	18-CB0332-JNX	RES. C.F. 3.3K OHM 1/6W +/-5%	R278
08-275151-001	18-CB0332-JNX	RES. C.F. 3.3K OHM 1/6W +/-5%	R13
08-275151-001	18-CB0332-JNX	RES. C.F. 3.3K OHM 1/6W +/-5%	R11
08-275151-001	18-CB0333-JNX	RES. C.F. 33K OHM 1/6W +/-5%	R020
08-275151-001	18-CB0333-JNX	RES. C.F. 33K OHM 1/6W +/-5%	R031
08-275151-001	18-CB0333-JNX	RES. C.F. 33K OHM 1/6W +/-5%	R305
08-275151-001	18-CB0362-JNX	RES. C.F. 3.6K OHM 1/6W +/-5%	R040
08-275151-001	18-CB0391-JNX	RES. C.F. 390 OHM 1/6W +/-5%	R251
08-275151-001	18-CB0393-JNX	RES. C.F. 39K OHM 1/6W +/-5%	R306
08-275151-001	18-CB0393-JNX	RES. C.F. 39K OHM 1/6W +/-5%	R173
08-275151-001	18-CB0470-JNX	RES. C.F. 47 OHM 1/6W +/-5%	R066
08-275151-001	18-CB0470-JNX	RES. C.F. 47 OHM 1/6W +/-5%	R068
08-275151-001	18-CB0471-JNX	RES. C.F. 470 OHM 1/6W +/-5%	R265
08-275151-001	18-CB0471-JNX	RES. C.F. 470 OHM 1/6W +/-5%	R048
08-275151-001	18-CB0472-JNX	RES. C.F. 4.7K OHM 1/6W +/-5%	R617
08-275151-001	18-CB0472-JNX	RES. C.F. 4.7K OHM 1/6W +/-5%	R619
08-275151-001	18-CB0472-JNX	RES. C.F. 4.7K OHM 1/6W +/-5%	R907
08-275151-001	18-CB0472-JNX	RES. C.F. 4.7K OHM 1/6W +/-5%	R908
08-275151-001	18-CB0472-JNX	RES. C.F. 4.7K OHM 1/6W +/-5%	R015
08-275151-001	18-CB0472-JNX	RES. C.F. 4.7K OHM 1/6W +/-5%	R033
08-275151-001	18-CB0472-JNX	RES. C.F. 4.7K OHM 1/6W +/-5%	R027

Assembly	Parts	Description	Location
08-275151-001	18-CB0472-JNX	RES. C.F. 4.7K OHM 1/6W +/-5%	R232
08-275151-001	18-CB0472-JNX	RES. C.F. 4.7K OHM 1/6W +/-5%	R168
08-275151-001	18-CB0472-JNX	RES. C.F. 4.7K OHM 1/6W +/-5%	R170
08-275151-001	18-CB0472-JNX	RES. C.F. 4.7K OHM 1/6W +/-5%	R171
08-275151-001	18-CB0472-JNX	RES. C.F. 4.7K OHM 1/6W +/-5%	R172
08-275151-001	18-CB0472-JNX	RES. C.F. 4.7K OHM 1/6W +/-5%	R022
08-275151-001	18-CB0472-JNX	RES. C.F. 4.7K OHM 1/6W +/-5%	R242
08-275151-001	18-CB0472-JNX	RES. C.F. 4.7K OHM 1/6W +/-5%	R216
08-275151-001	18-CB0472-JNX	RES. C.F. 4.7K OHM 1/6W +/-5%	R409
08-275151-001	18-CB0473-JNX	RES. C.F. 47K OHM 1/6W +/-5%	R638
08-275151-001	18-CB0473-JNX	RES. C.F. 47K OHM 1/6W +/-5%	R639
08-275151-001	18-CB0473-JNX	RES. C.F. 47K OHM 1/6W +/-5%	R246
08-275151-001	18-CB0473-JNX	RES. C.F. 47K OHM 1/6W +/-5%	R203
08-275151-001	18-CB0473-JNX	RES. C.F. 47K OHM 1/6W +/-5%	R016
08-275151-001	18-CB0473-JNX	RES. C.F. 47K OHM 1/6W +/-5%	R257
08-275151-001	18-CB0473-JNX	RES. C.F. 47K OHM 1/6W +/-5%	R166
08-275151-001	18-CB0473-JNX	RES. C.F. 47K OHM 1/6W +/-5%	R006
08-275151-001	18-CB0473-JNX	RES. C.F. 47K OHM 1/6W +/-5%	R024
08-275151-001	18-CB0473-JNX	RES. C.F. 47K OHM 1/6W +/-5%	R12
08-275151-001	18-CB0475-JNX	RES. C.F. 4.7M OHM 1/6W +/-5%	R271
08-275151-001	18-CB0511-JNX	RES. C.F. 510 OHM 1/6W +/-5%	R276
08-275151-001	18-CB0511-JNX	RES. C.F. 510 OHM 1/6W +/-5%	R230
08-275151-001	18-CB0561-JNX	RES. C.F. 560 OHM 1/6W +/-5%	R913
08-275151-001	18-CB0561-JNX	RES. C.F. 560 OHM 1/6W +/-5%	R269
08-275151-001	18-CB0561-JNX	RES. C.F. 560 OHM 1/6W +/-5%	R201
08-275151-001	18-CB0561-JNX	RES. C.F. 560 OHM 1/6W +/-5%	R237
08-275151-001	18-CB0562-JNX	RES. C.F. 5.6K OHM 1/6W +/-5%	R611
08-275151-001	18-CB0562-JNX	RES. C.F. 5.6K OHM 1/6W +/-5%	R612
08-275151-001	18-CB0562-JNX	RES. C.F. 5.6K OHM 1/6W +/-5%	R026
08-275151-001	18-CB0562-JNX	RES. C.F. 5.6K OHM 1/6W +/-5%	R291
08-275151-001	18-CB0562-JNX	RES. C.F. 5.6K OHM 1/6W +/-5%	R025
08-275151-001	18-CB0563-JNX	RES. C.F. 56K OHM 1/6W +/-5%	R126
08-275151-001	18-CB0682-JNX	RES. C.F. 6.8K OHM 1/6W +/-5%	R909
08-275151-001	18-CB0682-JNX	RES. C.F. 6.8K OHM 1/6W +/-5%	R037
08-275151-001	18-CB0682-JNX	RES. C.F. 6.8K OHM 1/6W +/-5%	R227
08-275151-001	18-CB0682-JNX	RES. C.F. 6.8K OHM 1/6W +/-5%	R294
08-275151-001	18-CB0682-JNX	RES. C.F. 6.8K OHM 1/6W +/-5%	R067
08-275151-001	18-CB0682-JNX	RES. C.F. 6.8K OHM 1/6W +/-5%	R065
08-275151-001	18-CB0682-JNX	RES. C.F. 6.8K OHM 1/6W +/-5%	R046
08-275151-001	18-CB0682-JNX	RES. C.F. 6.8K OHM 1/6W +/-5%	R047
08-275151-001	18-CB0683-JNX	RES. C.F. 68K OHM 1/6W +/-5%	R057
08-275151-001	18-CB0683-JNX	RES. C.F. 68K OHM 1/6W +/-5%	R058
08-275151-001	18-CB0683-JNX	RES. C.F. 68K OHM 1/6W +/-5%	R060
08-275151-001	18-CB0750-JNX	RES. C.F. 75 OHM 1/6W +/-5%	R920
08-275151-001	18-CB0820-JNX	RES. C.F. 82 OHM 1/6W +/-5%	R914
08-275151-001	18-CB0821-JNX	RES. C.F. 820 OHM 1/6W +/-5%	R264
08-275151-001	18-CB0821-JNX	RES. C.F. 820 OHM 1/6W +/-5%	R214
08-275151-001	18-CB0822-JNX	RES. C.F. 8.2K OHM 1/6W +/-5%	R202
08-275151-001	18-CB0822-JNX	RES. C.F. 8.2K OHM 1/6W +/-5%	R238
08-275151-001	18-CB0822-JNX	RES. C.F. 8.2K OHM 1/6W +/-5%	R204
08-275151-001	18-CB0823-JNX	RES. C.F. 82K OHM 1/6W +/-5%	R125
08-275151-001	18-CD0221-JNX	RES. C.F. 220 OHM 1/4W +/-5%	R833A
08-275151-001	18-CD0222-JNX	RES. C.F. 2.2K OHM 1/4W +/-5%	R017
08-275151-001	18-CE0822-JNX	RES. C.F. 8.2K OHM 1/2W +/-5%	R167
08-275151-001	18-DF0129-JGX	RES. M.F 1.2 OHM 1W +/-5%	R307
08-275151-001	18-EG0109-JH1	RES. FUS 1 OHM 2W +/-5%	R406
08-275151-001	18-FE0121-JXX	RES. M.O. 120 OHM 1/2W +/-5%	R308

Assembly	Parts	Description	Location
08-275151-001	18-FE0221-JXX	RES. M.O. 220 OHM 1/2W +/-5%	R315
08-275151-001	18-FE0301-JXX	RES. M.O. 300 OHM 1/2W +/-5%	R313
08-275151-001	18-FE0472-JXX	RES. M.O. 4.7K OHM 1/2W +/-5%	R420
08-275151-001	18-FE0472-JXX	RES. M.O. 4.7K OHM 1/2W +/-5%	R416
08-275151-001	18-FE0681-JXX	RES. M.O. 680 OHM 1/2W +/-5%	R421
08-275151-001	18-FE0759-JXX	RES. M.O. 7.5 OHM 1/2W +/-5%	R832A
08-275151-001	18-FF0103-JGX	RES. M.O. 10K OHM 1W +/-5%	R407A
08-275151-001	18-FF0221-JGX	RES. M.O. 220 OHM 1W +/-5%	R309
08-275151-001	18-FF0242-JGX	RES. M.O. 2.4K OHM 1W +/-5%	R448
08-275151-001	18-FG0399-JH1	RES. M.O. 3.9 OHM 2W +/-5%	R402
08-275151-001	18-FG0479-JH1	RES. M.O. 4.7 OHM 2W +/-5%	R301
08-275151-001	18-FH0822-JI1	RES. M.O. 8.2K OHM 3W +/-5%	R418
08-275151-001	18-FH0822-JI1	RES. M.O. 8.2K OHM 3W +/-5%	R443
08-275151-001	18-FH0822-JI1	RES. M.O. 8.2K OHM 3W +/-5%	R444
08-275151-001	18-FH0822-JI1	RES. M.O. 8.2K OHM 3W +/-5%	R445
08-275151-001	18-GJ0229-KU1	RES. CEMENT 2.2 OHM 5W +/-10%	R601
08-275151-001	20-141610-302	TRIMMER B3K VERT TYPE	VR315
08-275151-001	20-141630-502	TRIMMER B5K VERT TYPE	VR401
08-275151-001	20-200561-102	TRIMMER B1K HORIZ TYPE	VR203
08-275151-001	20-202980-503	TRIMMER B50K VERT TYPE	VR206
08-275151-001	20-202980-503	TRIMMER B50K VERT TYPE	VR204
08-275151-001	20-216061-504	TRIMMER 500K VERT TYPE	VR202
08-275151-001	25-BBB101-M11	CAP. ELEC 100 UF 10V +/-20%	C801A
08-275151-001	25-BCA102-M11	CAP. ELEC 1000 UF 16V +/-20%	C621
08-275151-001	25-BCA102-M11	CAP. ELEC 1000 UF 16V +/-20%	C147
08-275151-001	25-BCB100-M11	CAP. ELEC 10 UF 16V +/-20%	C903
08-275151-001	25-BCB100-M11	CAP. ELEC 10 UF 16V +/-20%	C904
08-275151-001	25-BCB100-M11	CAP. ELEC 10 UF 16V +/-20%	C905
08-275151-001	25-BCB100-M11	CAP. ELEC 10 UF 16V +/-20%	C921
08-275151-001	25-BCB100-M11	CAP. ELEC 10 UF 16V +/-20%	C922
08-275151-001	25-BCB100-M11	CAP. ELEC 10 UF 16V +/-20%	C920
08-275151-001	25-BCB100-M11	CAP. ELEC 10 UF 16V +/-20%	C910
08-275151-001	25-BCB100-M11	CAP. ELEC 10 UF 16V +/-20%	C01
08-275151-001	25-BCB100-M11	CAP. ELEC 10 UF 16V +/-20%	C619
08-275151-001	25-BCB100-M11	CAP. ELEC 10 UF 16V +/-20%	C147A
08-275151-001	25-BCB100-M11	CAP. ELEC 10 UF 16V +/-20%	C208
08-275151-001	25-BCB100-M11	CAP. ELEC 10 UF 16V +/-20%	C216
08-275151-001	25-BCB100-M11	CAP. ELEC 10 UF 16V +/-20%	C251
08-275151-001	25-BCB100-M11	CAP. ELEC 10 UF 16V +/-20%	C149
08-275151-001	25-BCB100-M11	CAP. ELEC 10 UF 16V +/-20%	C152
08-275151-001	25-BCB100-M11	CAP. ELEC 10 UF 16V +/-20%	C154
08-275151-001	25-BCB100-M11	CAP. ELEC 10 UF 16V +/-20%	C148
08-275151-001	25-BCB101-M11	CAP. ELEC 100 UF 16V +/-20%	C231
08-275151-001	25-BCB220-M11	CAP. ELEC 22 UF 16V +/-20%	C907
08-275151-001	25-BCB220-M11	CAP. ELEC 22 UF 16V +/-20%	C207
08-275151-001	25-BCB220-M11	CAP. ELEC 22 UF 16V +/-20%	C275
08-275151-001	25-BCB220-M11	CAP. ELEC 22 UF 16V +/-20%	C222
08-275151-001	25-BCB220-M11	CAP. ELEC 22 UF 16V +/-20%	C245
08-275151-001	25-BCB220-M11	CAP. ELEC 22 UF 16V +/-20%	C028
08-275151-001	25-BCB221-M11	CAP. ELEC 220 UF 16V +/-20%	C606
08-275151-001	25-BCB221-M11	CAP. ELEC 220 UF 16V +/-20%	C607
08-275151-001	25-BCB221-M11	CAP. ELEC 220 UF 16V +/-20%	C204
08-275151-001	25-BCB470-M11	CAP. ELEC 47 UF 16V +/-20%	C005A
08-275151-001	25-BCB470-M11	CAP. ELEC 47 UF 16V +/-20%	C001
08-275151-001	25-BDA471-M11	CAP. ELEC 470 UF 25V +/-20%	C627
08-275151-001	25-BDA471-M11	CAP. ELEC 470 UF 25V +/-20%	C628
08-275151-001	25-BEA102-M11	CAP. ELEC 1000 UF 35V +/-20%	C601

Assembly	Parts	Description	Location
08-275151-001	25-BEA102-M11	CAP. ELEC 1000 UF 35V +/-20%	C405
08-275151-001	25-BEA221-M11	CAP. ELEC 220 UF 35V +/-20%	C303
08-275151-001	25-BEA222-M11	CAP. ELEC 2200 UF 35V +/-20%	C301
08-275151-001	25-BEG332-M11	CAP. ELEC 3300 UF 35V +/-20%	C311
08-275151-001	25-BFB100-M11	CAP. ELEC 10 UF 50V +/-20%	C006
08-275151-001	25-BFB109-K1A	CAP. ELEC 1 UF 50V 10% CEC-K	C272
08-275151-001	25-BFB109-K1A	CAP. ELEC 1 UF 50V 10% CEC-K	C312
08-275151-001	25-BFB109-M11	CAP. ELEC 1 UF 50V +/-20%	C237
08-275151-001	25-BFB109-M11	CAP. ELEC 1 UF 50V +/-20%	C249
08-275151-001	25-BFB109-M11	CAP. ELEC 1 UF 50V +/-20%	C11
08-275151-001	25-BFB229-M11	CAP. ELEC 2.2 UF 50V +/-20%	C252
08-275151-001	25-BFB229-M11	CAP. ELEC 2.2 UF 50V +/-20%	C217
08-275151-001	25-BFB229-M11	CAP. ELEC 2.2 UF 50V +/-20%	C603
08-275151-001	25-BFB339-M11	CAP. ELEC 3.3 UF 50V +/-20%	C234
08-275151-001	25-BFB478-M11	CAP. ELEC 0.47 UF 50V +/-20%	C212
08-275151-001	25-BFB479-M11	CAP. ELEC 4.7 UF 50V +/-20%	C030
08-275151-001	25-BFB479-M11	CAP. ELEC 4.7 UF 50V +/-20%	C613
08-275151-001	25-BFB479-M11	CAP. ELEC 4.7 UF 50V +/-20%	C618
08-275151-001	25-BFB479-M11	CAP. ELEC 4.7 UF 50V +/-20%	C620
08-275151-001	25-BFB479-M11	CAP. ELEC 4.7 UF 50V +/-20%	C610
08-275151-001	25-BFB479-M11	CAP. ELEC 4.7 UF 50V +/-20%	C246
08-275151-001	25-BFB479-M11	CAP. ELEC 4.7 UF 50V +/-20%	C151
08-275151-001	25-BJA479-M11	CAP. ELEC 4.7 UF 160V +/-20%	C442
08-275151-001	25-BKA100-M11	CAP. ELEC 10 UF 200V +/-20%	C407A
08-275151-001	25-BKG101-M11	CAP. ELEC 100 UF 200V +/-20%	C426
08-275151-001	25-BLA100-M11	CAP. ELEC 10 UF 250V +/-20%	C402
08-275151-001	25-DFB229-M11	CAP. ELEC 2.2 UF 50V +/-20% BP	C604
08-275151-001	25-DFB229-M11	CAP. ELEC 2.2 UF 50V +/-20% BP	C605
08-275151-001	25-DFB229-M11	CAP. ELEC 2.2 UF 50V +/-20% BP	C265
08-275151-001	26-ABA509-CZX	CAP. CER 5 PF 50V +/-0.25 SL	C213
08-275151-001	26-ABA829-CZX	CAP. CER 8.2 PF 50V +/-0.25 PF	C002
08-275151-001	26-ABC100-JCX	CAP. CER 10 PF 50V +/-5% NPO	C260
08-275151-001	26-ABC100-JCX	CAP. CER 10 PF 50V +/-5% NPO	C256
08-275151-001	26-ABC101-JZX	CAP. CER 100 PF 50V +/-5% SL	C014
08-275151-001	26-ABC101-JZX	CAP. CER 100 PF 50V +/-5% SL	C015
08-275151-001	26-ABC101-JZX	CAP. CER 100 PF 50V +/-5% SL	C016
08-275151-001	26-ABC101-JZX	CAP. CER 100 PF 50V +/-5% SL	C011
08-275151-001	26-ABC102-KBX	CAP. CER 1N PF 50V +/-10% B	C5
08-275151-001	26-ABC102-KBX	CAP. CER 1N PF 50V +/-10% B	C421
08-275151-001	26-ABC102-KBX	CAP. CER 1N PF 50V +/-10% B	C125
08-275151-001	26-ABC102-KBX	CAP. CER 1N PF 50V +/-10% B	C304
08-275151-001	26-ABC102-KBX	CAP. CER 1N PF 50V +/-10% B	C306
08-275151-001	26-ABC103-ZFX	CAP. CER 0.01 UF 50V +80-20% F	C902
08-275151-001	26-ABC103-ZFX	CAP. CER 0.01 UF 50V +80-20% F	C840A
08-275151-001	26-ABC103-ZFX	CAP. CER 0.01 UF 50V +80-20% F	C239
08-275151-001	26-ABC103-ZFX	CAP. CER 0.01 UF 50V +80-20% F	C323
08-275151-001	26-ABC103-ZFX	CAP. CER 0.01 UF 50V +80-20% F	C614
08-275151-001	26-ABC103-ZFX	CAP. CER 0.01 UF 50V +80-20% F	C616
08-275151-001	26-ABC103-ZFX	CAP. CER 0.01 UF 50V +80-20% F	C617
08-275151-001	26-ABC103-ZFX	CAP. CER 0.01 UF 50V +80-20% F	C646
08-275151-001	26-ABC103-ZFX	CAP. CER 0.01 UF 50V +80-20% F	C203
08-275151-001	26-ABC103-ZFX	CAP. CER 0.01 UF 50V +80-20% F	C019
08-275151-001	26-ABC103-ZFX	CAP. CER 0.01 UF 50V +80-20% F	C026
08-275151-001	26-ABC103-ZFX	CAP. CER 0.01 UF 50V +80-20% F	C255
08-275151-001	26-ABC103-ZFX	CAP. CER 0.01 UF 50V +80-20% F	C214
08-275151-001	26-ABC103-ZFX	CAP. CER 0.01 UF 50V +80-20% F	C223
08-275151-001	26-ABC103-ZFX	CAP. CER 0.01 UF 50V +80-20% F	C263

Assembly	Parts	Description	Location
08-275151-001	26-ABC103-ZFX	CAP. CER 0.01 UF 50V +80-20% F	C253
08-275151-001	26-ABC103-ZFX	CAP. CER 0.01 UF 50V +80-20% F	C250
08-275151-001	26-ABC103-ZFX	CAP. CER 0.01 UF 50V +80-20% F	C230
08-275151-001	26-ABC103-ZFX	CAP. CER 0.01 UF 50V +80-20% F	C248
08-275151-001	26-ABC103-ZFX	CAP. CER 0.01 UF 50V +80-20% F	C244
08-275151-001	26-ABC103-ZFX	CAP. CER 0.01 UF 50V +80-20% F	C206
08-275151-001	26-ABC103-ZFX	CAP. CER 0.01 UF 50V +80-20% F	C005
08-275151-001	26-ABC120-JCX	CAP. CER 12 PF 50V +/-5% NPO	C211
08-275151-001	26-ABC150-JCX	CAP. CER 15 PF 50V +/-5% NPO	C270
08-275151-001	26-ABC180-JZX	CAP. CER 18 PF 50V +/-5% SL	C022
08-275151-001	26-ABC181-JZX	CAP. CER 180 PF 50V +/-5% SL	C241
08-275151-001	26-ABC181-JZX	CAP. CER 180 PF 50V +/-5% SL	C201
08-275151-001	26-ABC220-JCX	CAP. CER 22 PF 50V +/-5% NPO	C258
08-275151-001	26-ABC220-JZX	CAP. CER 22 PF 50V +/-5% SL	C047
08-275151-001	26-ABC220-JZX	CAP. CER 22 PF 50V +/-5% SL	C219
08-275151-001	26-ABC220-JZX	CAP. CER 22 PF 50V +/-5% SL	C268
08-275151-001	26-ABC220-JZX	CAP. CER 22 PF 50V +/-5% SL	C257
08-275151-001	26-ABC221-JCX	CAP. CER 220 PF 50V +/-5% NPO	C010
08-275151-001	26-ABC221-JZX	CAP. CER 220 PF 50V +/-5% SL	C017
08-275151-001	26-ABC221-JZX	CAP. CER 220 PF 50V +/-5% SL	C013
08-275151-001	26-ABC221-JZX	CAP. CER 220 PF 50V +/-5% SL	C240
08-275151-001	26-ABC221-JZX	CAP. CER 220 PF 50V +/-5% SL	C242
08-275151-001	26-ABC241-JZX	CAP. CER 240 PF 50V +/-5% SL	C236
08-275151-001	26-ABC300-JZX	CAP. CER 30 PF 50V +/-5% SL	C023
08-275151-001	26-ABC300-JZX	CAP. CER 30 PF 50V +/-5% SL	C024
08-275151-001	26-ABC330-JCX	CAP. CER 33 PF 50V +/-5% NPO	C271
08-275151-001	26-ABC330-JZX	CAP. CER 33 PF 50V +/-5% SL	C266
08-275151-001	26-ABC470-JCX	CAP. CER 47 PF 50V +/-5% NPO	C215
08-275151-001	26-ABC470-JZX	CAP. CER 47 PF 50V +/-5% SL	C269
08-275151-001	26-ABC470-JZX	CAP. CER 47 PF 50V +/-5% SL	C018
08-275151-001	26-ABC470-JZX	CAP. CER 47 PF 50V +/-5% SL	C020
08-275151-001	26-ABC470-JZX	CAP. CER 47 PF 50V +/-5% SL	C012
08-275151-001	26-ABC470-JZX	CAP. CER 47 PF 50V +/-5% SL	C021
08-275151-001	26-ABC809-JUX	CAP. CER 8 PF 50V +/-5% UJ	C247
08-275151-001	26-ABC809-JUX	CAP. CER 8 PF 50V +/-5% UJ	C243
08-275151-001	26-ABC820-JZX	CAP. CER 82 PF 50V +/-5% SL	C226
08-275151-001	26-ABC820-JZX	CAP. CER 82 PF 50V +/-5% SL	C227
08-275151-001	26-ABC820-JZX	CAP. CER 82 PF 50V +/-5% SL	C228
08-275151-001	26-AIC221-KBX	CAP. CER 220 PF 500V +/-10% B	C404
08-275151-001	26-AIC221-KBX	CAP. CER 220 PF 500V +/-10% B	C401
08-275151-001	26-AIC332-KBX	CAP. CER 3300 PF 500V +/-10% B	C443
08-275151-001	26-AIC391-KBX	CAP. CER 390 PF 500V +/-10%	C444
08-275151-001	27-AHR394-J01	CAP. M.PP 0.39 UF 400V +/-5%	C407
08-275151-001	27-ALR332-J01	CAP. M.PP 0.0033UF 1.6KV +/-5%	C425
08-275151-001	27-ALR392-J01	CAP. M.PP 0.0039UF 1.6KV +/-5%	C409
08-275151-001	27-ALR632-J01	CAP. M.PP 0.0063UF 1.6KV +/-5%	C424
08-275151-001	27-MBC104-J01	CAP. M. P.E. 0.1 UF 50V +/-5%	C911
08-275151-001	27-MBC104-J01	CAP. M. P.E. 0.1 UF 50V +/-5%	C912
08-275151-001	27-MBC104-J01	CAP. M. P.E. 0.1 UF 50V +/-5%	C602
08-275151-001	27-MBC104-J01	CAP. M. P.E. 0.1 UF 50V +/-5%	C625
08-275151-001	27-MBC104-J01	CAP. M. P.E. 0.1 UF 50V +/-5%	C626
08-275151-001	27-MBC104-J01	CAP. M. P.E. 0.1 UF 50V +/-5%	C229
08-275151-001	27-MBC104-J01	CAP. M. P.E. 0.1 UF 50V +/-5%	C220
08-275151-001	27-MBC104-J01	CAP. M. P.E. 0.1 UF 50V +/-5%	C218
08-275151-001	27-MBC184-J01	CAP. M. P.E. 0.18 UF 50V +/-5%	C608
08-275151-001	27-MBC184-J01	CAP. M. P.E. 0.18 UF 50V +/-5%	C611
08-275151-001	27-MBC224-J01	CAP. M. P.E. 0.22 UF 50V +/-5%	C008

Assembly	Parts	Description	Location
08-275151-001	27-MBC393-J01	CAP. M. P.E. 0.039UF 50V +/-5%	C313
08-275151-001	27-PBC102-J01	CAP. P.E. 0.001 UF 50V +/-5%	C691
08-275151-001	27-PBC102-J01	CAP. P.E. 0.001 UF 50V +/-5%	C692
08-275151-001	27-PBC103-J01	CAP. P.E. 0.01 UF 50V +/-5%	C264
08-275151-001	27-PBC104-J01	CAP. P.E. 0.1 UF 50V +/-5%	C225
08-275151-001	27-PBC104-J01	CAP. P.E. 0.1 UF 50V +/-5%	C224
08-275151-001	27-PBC104-J01	CAP. P.E. 0.1 UF 50V +/-5%	C221
08-275151-001	27-PBC104-J01	CAP. P.E. 0.1 UF 50V +/-5%	C007
08-275151-001	27-PBC104-J01	CAP. P.E. 0.1 UF 50V +/-5%	C202
08-275151-001	27-PBC104-J01	CAP. P.E. 0.1 UF 50V +/-5%	C205
08-275151-001	27-PBC223-J01	CAP. P.E. 0.022 UF 50V +/-5%	C232
08-275151-001	27-PBC223-J01	CAP. P.E. 0.022 UF 50V +/-5%	C233
08-275151-001	27-PBC272-J01	CAP. P.E. 0.0027 UF 50V +/-5%	C609
08-275151-001	27-PBC272-J01	CAP. P.E. 0.0027 UF 50V +/-5%	C612
08-275151-001	27-PBC272-J01	CAP. P.E. 0.0027 UF 50V +/-5%	C238
08-275151-001	27-PBC273-J01	CAP. P.E. 0.027 UF 50V +/-5%	C262
08-275151-001	27-PBC273-J01	CAP. P.E. 0.027 UF 50V +/-5%	C261
08-275151-001	27-PBC333-J01	CAP. P.E. 0.033 UF 50V +/-5%	C308
08-275151-001	27-PBC472-J01	CAP. P.E. 0.0047 UF 50V +/-5%	C441
08-275151-001	27-PBC473-J01	CAP. P.E. 0.047 UF 50V +/-5%	C153
08-275151-001	27-PBC562-J01	CAP. P.E. 0.0056 UF 50V +/-5%	C448
08-275151-001	27-PBC563-J01	CAP. P.E. 0.056 UF 50V +/-5%	C267
08-275151-001	27-PBC563-J01	CAP. P.E. 0.056 UF 50V +/-5%	C320
08-275151-001	27-PBC683-J01	CAP. P.E. 0.068 UF 50V +/-5%	C235
08-275151-001	27-RHQ223-J01	CAP. PP 0.022 UF 400V +/-5%	C423
08-275151-001	27-RHQ563-J01	CAP. PP 0.056 UF 400V +/-5%	C403
08-275151-001	34-A608K6-1BX	COIL CHOKE 0.6 UH +/-10%	L422
08-275151-001	34-R100J2-0EX	COIL PL - 10 UH +/-5%	L001
08-275151-001	34-R100J2-0EX	COIL PL - 10 UH +/-5%	L002
08-275151-001	34-R101J2-0EX	COIL PL - 100 UH +/-5%	L110
08-275151-001	34-R101J2-0EX	COIL PL - 100 UH +/-5%	L205
08-275151-001	34-R101J2-0EX	COIL PL - 100 UH +/-5%	L206
08-275151-001	34-R101J2-0EX	COIL PL - 100 UH +/-5%	L601
08-275151-001	34-R109J2-0EX	COIL PL - 1 UH +/-5%	L421
08-275151-001	34-R120J2-0EX	COIL PL - 12 UH +/-5%	L203
08-275151-001	34-R300J2-0EX	COIL PL - 30 UH +/-5%	L204
08-275151-001	34-R300J2-0EX	COIL PL - 30 UH +/-5%	L207
08-275151-001	35-139730-00X	FERR. BEAD BF60	L411
08-275151-001	35-139730-00X	FERR. BEAD BF60	L412
08-275151-001	36-107481-A02	TRANSFORMER HOR. DRIVE	T401
08-275151-001	36-256200-00X	COIL LINEARITY TRL242 (21UH)	L402
08-275151-001	37-JF0702-B0X	FLYBACK JF0702B (25/29)	T461
08-275151-001	38-130990-000	COIL I.F.T. TRF5418H	T203
08-275151-001	38-138270-000	COIL DEMODULATION (TY-6045)	T206
08-275151-001	38-215980-000	COIL I.F.T. TRF1092	T205
08-275151-001	38-215990-000	COIL I.F.T. TRF1093	T204
08-275151-001	38-243750-000	COIL I.F.T. KM516RC	T001
08-275151-001	38-243750-000	COIL I.F.T. KM516RC	T201
08-275151-001	38-243750-000	COIL I.F.T. KM516RC	T202
08-275151-001	40-262241-0AF	P.C.B. MAIN BD	
08-275151-001	41-BF0050-3BB	WIRE UL 1007 #24 50MM ORG	
08-275151-001	41-BF0080-0BB	WIRE UL 1007 #24 80MM BLACK	
08-275151-001	41-WJ0050-B00	WIRE BARE JUMPER 5MM	L404
08-275151-001	41-WJ0050-B00	WIRE BARE JUMPER 5MM	J002
08-275151-001	41-WJ0050-B00	WIRE BARE JUMPER 5MM	J004
08-275151-001	41-WJ0050-B00	WIRE BARE JUMPER 5MM	J008
08-275151-001	41-WJ0050-B00	WIRE BARE JUMPER 5MM	J017



Assembly	Parts	Description	Location
08-275151-001	41-WJ0050-B00	WIRE BARE JUMPER 5MM	J030
08-275151-001	41-WJ0050-B00	WIRE BARE JUMPER 5MM	J040
08-275151-001	41-WJ0050-B00	WIRE BARE JUMPER 5MM	J044
08-275151-001	41-WJ0050-B00	WIRE BARE JUMPER 5MM	J069
08-275151-001	41-WJ0050-B00	WIRE BARE JUMPER 5MM	J202
08-275151-001	41-WJ0050-B00	WIRE BARE JUMPER 5MM	J223
08-275151-001	41-WJ0050-B00	WIRE BARE JUMPER 5MM	J606
08-275151-001	41-WJ0050-B00	WIRE BARE JUMPER 5MM	J613
08-275151-001	41-WJ0050-B00	WIRE BARE JUMPER 5MM	L403
08-275151-001	41-WJ0050-B00	WIRE BARE JUMPER 5MM	L401
08-275151-001	41-WJ0050-B00	WIRE BARE JUMPER 5MM	J258
08-275151-001	41-WJ0075-B00	WIRE BARE JUMPER 7.5MM	J213
08-275151-001	41-WJ0075-B00	WIRE BARE JUMPER 7.5MM	J906
08-275151-001	41-WJ0075-B00	WIRE BARE JUMPER 7.5MM	J909
08-275151-001	41-WJ0075-B00	WIRE BARE JUMPER 7.5MM	J235
08-275151-001	41-WJ0075-B00	WIRE BARE JUMPER 7.5MM	J029
08-275151-001	41-WJ0075-B00	WIRE BARE JUMPER 7.5MM	J001
08-275151-001	41-WJ0075-B00	WIRE BARE JUMPER 7.5MM	J006
08-275151-001	41-WJ0075-B00	WIRE BARE JUMPER 7.5MM	J007
08-275151-001	41-WJ0075-B00	WIRE BARE JUMPER 7.5MM	J020
08-275151-001	41-WJ0075-B00	WIRE BARE JUMPER 7.5MM	J022
08-275151-001	41-WJ0075-B00	WIRE BARE JUMPER 7.5MM	J027
08-275151-001	41-WJ0075-B00	WIRE BARE JUMPER 7.5MM	J028
08-275151-001	41-WJ0075-B00	WIRE BARE JUMPER 7.5MM	J251
08-275151-001	41-WJ0075-B00	WIRE BARE JUMPER 7.5MM	J222
08-275151-001	41-WJ0075-B00	WIRE BARE JUMPER 7.5MM	J031
08-275151-001	41-WJ0075-B00	WIRE BARE JUMPER 7.5MM	J035
08-275151-001	41-WJ0075-B00	WIRE BARE JUMPER 7.5MM	J042
08-275151-001	41-WJ0075-B00	WIRE BARE JUMPER 7.5MM	J050
08-275151-001	41-WJ0075-B00	WIRE BARE JUMPER 7.5MM	J070
08-275151-001	41-WJ0075-B00	WIRE BARE JUMPER 7.5MM	J101
08-275151-001	41-WJ0075-B00	WIRE BARE JUMPER 7.5MM	J105
08-275151-001	41-WJ0075-B00	WIRE BARE JUMPER 7.5MM	J106
08-275151-001	41-WJ0075-B00	WIRE BARE JUMPER 7.5MM	J107
08-275151-001	41-WJ0075-B00	WIRE BARE JUMPER 7.5MM	J108
08-275151-001	41-WJ0075-B00	WIRE BARE JUMPER 7.5MM	J110
08-275151-001	41-WJ0075-B00	WIRE BARE JUMPER 7.5MM	J111
08-275151-001	41-WJ0075-B00	WIRE BARE JUMPER 7.5MM	J113
08-275151-001	41-WJ0075-B00	WIRE BARE JUMPER 7.5MM	J114
08-275151-001	41-WJ0075-B00	WIRE BARE JUMPER 7.5MM	J116
08-275151-001	41-WJ0075-B00	WIRE BARE JUMPER 7.5MM	J117
08-275151-001	41-WJ0075-B00	WIRE BARE JUMPER 7.5MM	J122
08-275151-001	41-WJ0075-B00	WIRE BARE JUMPER 7.5MM	J201
08-275151-001	41-WJ0075-B00	WIRE BARE JUMPER 7.5MM	J212
08-275151-001	41-WJ0075-B00	WIRE BARE JUMPER 7.5MM	J221
08-275151-001	41-WJ0075-B00	WIRE BARE JUMPER 7.5MM	J224
08-275151-001	41-WJ0075-B00	WIRE BARE JUMPER 7.5MM	J226
08-275151-001	41-WJ0075-B00	WIRE BARE JUMPER 7.5MM	J227
08-275151-001	41-WJ0075-B00	WIRE BARE JUMPER 7.5MM	J231
08-275151-001	41-WJ0075-B00	WIRE BARE JUMPER 7.5MM	J244
08-275151-001	41-WJ0075-B00	WIRE BARE JUMPER 7.5MM	J245
08-275151-001	41-WJ0075-B00	WIRE BARE JUMPER 7.5MM	J246
08-275151-001	41-WJ0075-B00	WIRE BARE JUMPER 7.5MM	J247
08-275151-001	41-WJ0075-B00	WIRE BARE JUMPER 7.5MM	J248
08-275151-001	41-WJ0075-B00	WIRE BARE JUMPER 7.5MM	J303
08-275151-001	41-WJ0075-B00	WIRE BARE JUMPER 7.5MM	J304
08-275151-001	41-WJ0075-B00	WIRE BARE JUMPER 7.5MM	J405

Assembly	Parts	Description	Location
08-275151-001	41-WJ0075-B00	WIRE BARE JUMPER 7.5MM	J409
08-275151-001	41-WJ0075-B00	WIRE BARE JUMPER 7.5MM	J601
08-275151-001	41-WJ0075-B00	WIRE BARE JUMPER 7.5MM	J602
08-275151-001	41-WJ0075-B00	WIRE BARE JUMPER 7.5MM	J607
08-275151-001	41-WJ0075-B00	WIRE BARE JUMPER 7.5MM	J610
08-275151-001	41-WJ0075-B00	WIRE BARE JUMPER 7.5MM	J611
08-275151-001	41-WJ0075-B00	WIRE BARE JUMPER 7.5MM	J612
08-275151-001	41-WJ0075-B00	WIRE BARE JUMPER 7.5MM	J614
08-275151-001	41-WJ0075-B00	WIRE BARE JUMPER 7.5MM	J615
08-275151-001	41-WJ0100-B00	WIRE BARE JUMPER 10MM	J041
08-275151-001	41-WJ0100-B00	WIRE BARE JUMPER 10MM	J902
08-275151-001	41-WJ0100-B00	WIRE BARE JUMPER 10MM	J903
08-275151-001	41-WJ0100-B00	WIRE BARE JUMPER 10MM	J905
08-275151-001	41-WJ0100-B00	WIRE BARE JUMPER 10MM	J907
08-275151-001	41-WJ0100-B00	WIRE BARE JUMPER 10MM	J908A
08-275151-001	41-WJ0100-B00	WIRE BARE JUMPER 10MM	J043
08-275151-001	41-WJ0100-B00	WIRE BARE JUMPER 10MM	J009
08-275151-001	41-WJ0100-B00	WIRE BARE JUMPER 10MM	J010
08-275151-001	41-WJ0100-B00	WIRE BARE JUMPER 10MM	J011
08-275151-001	41-WJ0100-B00	WIRE BARE JUMPER 10MM	J012
08-275151-001	41-WJ0100-B00	WIRE BARE JUMPER 10MM	J016
08-275151-001	41-WJ0100-B00	WIRE BARE JUMPER 10MM	J056
08-275151-001	41-WJ0100-B00	WIRE BARE JUMPER 10MM	J057
08-275151-001	41-WJ0100-B00	WIRE BARE JUMPER 10MM	J118
08-275151-001	41-WJ0100-B00	WIRE BARE JUMPER 10MM	J120
08-275151-001	41-WJ0100-B00	WIRE BARE JUMPER 10MM	J121
08-275151-001	41-WJ0100-B00	WIRE BARE JUMPER 10MM	J206
08-275151-001	41-WJ0100-B00	WIRE BARE JUMPER 10MM	J207
08-275151-001	41-WJ0100-B00	WIRE BARE JUMPER 10MM	J208
08-275151-001	41-WJ0100-B00	WIRE BARE JUMPER 10MM	J211
08-275151-001	41-WJ0100-B00	WIRE BARE JUMPER 10MM	J220
08-275151-001	41-WJ0100-B00	WIRE BARE JUMPER 10MM	J228
08-275151-001	41-WJ0100-B00	WIRE BARE JUMPER 10MM	J229
08-275151-001	41-WJ0100-B00	WIRE BARE JUMPER 10MM	J230
08-275151-001	41-WJ0100-B00	WIRE BARE JUMPER 10MM	J232
08-275151-001	41-WJ0100-B00	WIRE BARE JUMPER 10MM	J233
08-275151-001	41-WJ0100-B00	WIRE BARE JUMPER 10MM	J234
08-275151-001	41-WJ0100-B00	WIRE BARE JUMPER 10MM	J241
08-275151-001	41-WJ0100-B00	WIRE BARE JUMPER 10MM	J249
08-275151-001	41-WJ0100-B00	WIRE BARE JUMPER 10MM	J252
08-275151-001	41-WJ0100-B00	WIRE BARE JUMPER 10MM	J259
08-275151-001	41-WJ0100-B00	WIRE BARE JUMPER 10MM	J301
08-275151-001	41-WJ0100-B00	WIRE BARE JUMPER 10MM	J402
08-275151-001	41-WJ0100-B00	WIRE BARE JUMPER 10MM	J413
08-275151-001	41-WJ0100-B00	WIRE BARE JUMPER 10MM	J414
08-275151-001	41-WJ0100-B00	WIRE BARE JUMPER 10MM	J415
08-275151-001	41-WJ0100-B00	WIRE BARE JUMPER 10MM	J608
08-275151-001	41-WJ0100-B00	WIRE BARE JUMPER 10MM	J609
08-275151-001	41-WJ0125-B00	WIRE BARE JUMPER 12.5MM	J242
08-275151-001	41-WJ0125-B00	WIRE BARE JUMPER 12.5MM	J003
08-275151-001	41-WJ0125-B00	WIRE BARE JUMPER 12.5MM	J019
08-275151-001	41-WJ0125-B00	WIRE BARE JUMPER 12.5MM	J021
08-275151-001	41-WJ0125-B00	WIRE BARE JUMPER 12.5MM	J025
08-275151-001	41-WJ0125-B00	WIRE BARE JUMPER 12.5MM	J026
08-275151-001	41-WJ0125-B00	WIRE BARE JUMPER 12.5MM	J036
08-275151-001	41-WJ0125-B00	WIRE BARE JUMPER 12.5MM	J038
08-275151-001	41-WJ0125-B00	WIRE BARE JUMPER 12.5MM	J051

Assembly	Parts	Description	Location
08-275151-001	41-WJ0125-B00	WIRE BARE JUMPER 12.5MM	J052
08-275151-001	41-WJ0125-B00	WIRE BARE JUMPER 12.5MM	J054
08-275151-001	41-WJ0125-B00	WIRE BARE JUMPER 12.5MM	J055
08-275151-001	41-WJ0125-B00	WIRE BARE JUMPER 12.5MM	J058
08-275151-001	41-WJ0125-B00	WIRE BARE JUMPER 12.5MM	J059
08-275151-001	41-WJ0125-B00	WIRE BARE JUMPER 12.5MM	J060
08-275151-001	41-WJ0125-B00	WIRE BARE JUMPER 12.5MM	J061
08-275151-001	41-WJ0125-B00	WIRE BARE JUMPER 12.5MM	J062
08-275151-001	41-WJ0125-B00	WIRE BARE JUMPER 12.5MM	J065
08-275151-001	41-WJ0125-B00	WIRE BARE JUMPER 12.5MM	J109
08-275151-001	41-WJ0125-B00	WIRE BARE JUMPER 12.5MM	J203
08-275151-001	41-WJ0125-B00	WIRE BARE JUMPER 12.5MM	J204
08-275151-001	41-WJ0125-B00	WIRE BARE JUMPER 12.5MM	J217
08-275151-001	41-WJ0125-B00	WIRE BARE JUMPER 12.5MM	J219
08-275151-001	41-WJ0125-B00	WIRE BARE JUMPER 12.5MM	J236
08-275151-001	41-WJ0125-B00	WIRE BARE JUMPER 12.5MM	J239
08-275151-001	41-WJ0125-B00	WIRE BARE JUMPER 12.5MM	J243
08-275151-001	41-WJ0125-B00	WIRE BARE JUMPER 12.5MM	J250
08-275151-001	41-WJ0125-B00	WIRE BARE JUMPER 12.5MM	J253
08-275151-001	41-WJ0125-B00	WIRE BARE JUMPER 12.5MM	J254
08-275151-001	41-WJ0125-B00	WIRE BARE JUMPER 12.5MM	J255
08-275151-001	41-WJ0125-B00	WIRE BARE JUMPER 12.5MM	J256
08-275151-001	41-WJ0125-B00	WIRE BARE JUMPER 12.5MM	J257
08-275151-001	41-WJ0125-B00	WIRE BARE JUMPER 12.5MM	J302
08-275151-001	41-WJ0125-B00	WIRE BARE JUMPER 12.5MM	J403
08-275151-001	41-WJ0125-B00	WIRE BARE JUMPER 12.5MM	J604
08-275151-001	41-WJ0125-B00	WIRE BARE JUMPER 12.5MM	J605
08-275151-001	41-WJ0125-B00	WIRE BARE JUMPER 12.5MM	J066
08-275151-001	41-WJ0125-B00	WIRE BARE JUMPER 12.5MM	R417
08-275151-001	41-WJ0150-B00	WIRE BARE JUMPER 15MM	J112
08-275151-001	41-WJ0150-B00	WIRE BARE JUMPER 15MM	J064
08-275151-001	41-WJ0150-B00	WIRE BARE JUMPER 15MM	J240
08-275151-001	41-WJ0150-B00	WIRE BARE JUMPER 15MM	J416
08-275151-001	41-WJ0150-B00	WIRE BARE JUMPER 15MM	J014
08-275151-001	41-WJ0150-B00	WIRE BARE JUMPER 15MM	J032
08-275151-001	41-WJ0150-B00	WIRE BARE JUMPER 15MM	J034
08-275151-001	41-WJ0150-B00	WIRE BARE JUMPER 15MM	J037
08-275151-001	41-WJ0150-B00	WIRE BARE JUMPER 15MM	J047
08-275151-001	41-WJ0150-B00	WIRE BARE JUMPER 15MM	J048
08-275151-001	41-WJ0150-B00	WIRE BARE JUMPER 15MM	J049
08-275151-001	41-WJ0150-B00	WIRE BARE JUMPER 15MM	J053
08-275151-001	41-WJ0150-B00	WIRE BARE JUMPER 15MM	J205
08-275151-001	41-WJ0150-B00	WIRE BARE JUMPER 15MM	J209
08-275151-001	41-WJ0150-B00	WIRE BARE JUMPER 15MM	J215
08-275151-001	41-WJ0150-B00	WIRE BARE JUMPER 15MM	J218
08-275151-001	41-WJ0150-B00	WIRE BARE JUMPER 15MM	J225
08-275151-001	41-WJ0150-B00	WIRE BARE JUMPER 15MM	J237
08-275151-001	41-WJ0150-B00	WIRE BARE JUMPER 15MM	J410
08-275151-001	41-WJ0150-B00	WIRE BARE JUMPER 15MM	J412
08-275151-001	41-WJ0150-B00	WIRE BARE JUMPER 15MM	J013
08-275151-001	41-WJ0150-B00	WIRE BARE JUMPER 15MM	J210
08-275151-001	41-WJ0150-B00	WIRE BARE JUMPER 15MM	J067
08-275151-001	41-WJ0175-B00	WIRE BARE JUMPER 17.5MM	J063
08-275151-001	41-WJ0175-B00	WIRE BARE JUMPER 17.5MM	J068
08-275151-001	41-WJ0175-B00	WIRE BARE JUMPER 17.5MM	J015
08-275151-001	41-WJ0175-B00	WIRE BARE JUMPER 17.5MM	J033
08-275151-001	41-WJ0175-B00	WIRE BARE JUMPER 17.5MM	J046

Assembly	Parts	Description	Location
08-275151-001	41-WJ0175-B00	WIRE BARE JUMPER 17.5MM	J603
08-275151-001	41-WJ0175-B00	WIRE BARE JUMPER 17.5MM	J214
08-275151-001	41-WJ0175-B00	WIRE BARE JUMPER 17.5MM	J216
08-275151-001	41-WJ0175-B00	WIRE BARE JUMPER 17.5MM	J238
08-275151-001	41-WJ0175-B00	WIRE BARE JUMPER 17.5MM	J401
08-275151-001	41-WJ0200-B00	WIRE BARE JUMPER 20MM	J115
08-275151-001	41-WJ0200-B00	WIRE BARE JUMPER 20MM	J404
08-275151-001	41-WJ0200-B00	WIRE BARE JUMPER 20MM	J406
08-275151-001	41-WJ0200-B00	WIRE BARE JUMPER 20MM	J407
08-275151-001	41-WJ0200-B00	WIRE BARE JUMPER 20MM	J408
08-275151-001	41-WJ0200-B00	WIRE BARE JUMPER 20MM	J411
08-275151-001	43-EN645A-11X	DELAY LINE CHROMA EFDEN645A11G	X203
08-275151-001	43-YBL25E-18X	DELAY LINE LUMI. YBL25E18	X201
08-275151-001	45-107190-10X	CRYSTAL 4.43 MHZ	X205
08-275151-001	45-117410-10X	CRYSTAL 3.58 MHZ	X204
08-275151-001	45-141710-100	RESONATOR CSB503F2	X202
08-275151-001	45-200540-200	CER. RESONATOR CSA-400MG	X001
08-275151-001	46-10960W-047	PIN BASE *4 TJC3-4A	P401
08-275151-001	46-10962W-027	PIN BASE *2 TJC2-2A	P602
08-275151-001	46-10962W-027	PIN BASE *2 TJC2-2A	P603
08-275151-001	46-11376W-037	PIN BASE *3 TJC2-3A	P404
08-275151-001	46-11376W-037	PIN BASE *3 TJC2-3A	P607
08-275151-001	46-12210W-037	PIN BASE *3 TJC3-3A	P002
08-275151-001	46-13541W-057	PIN BASE *5 TJC3-5A	P201
08-275151-001	46-20598W-047	PIN BASE *4 TJC1-4A	P421
08-275151-001	46-24672W-097	PIN BASE *9 TJC3-9A	P001
08-275151-001	46-24672W-127	PIN BASE *12 TJC3-12A	P901
08-275151-001	46-27094W-017	PIN BASE *1 TJC1-1B	
08-275151-001	46-27776H-037	HS 3P22 150/5 BE BK TJC2-3Y	SP05H
08-275151-001	46-27777H-057	HS 5P24 250 F/W TJC3-5Y/SCN-5Y	SP01H
08-275151-001	48-114820-001	SW. BAND SELECTOR JRS1301	SW201
08-275151-001	54-128372-000	FIBRE TUBE D=1MM L=10MM	
08-275151-001	54-128373-000	FIBRE TUBE D=1MM L=15MM	
08-275151-001	54-128700-0X0	FIBRE WASHER 3.3 X 10 X 0.8	
08-275151-001	62-10654X-00F	UNI - TIE 2.5X95MM	
08-275151-001	62-227680-0UA	HOLDER CABLE FOR FBT	
08-275151-001	62-247970-0HH	BRACKET 'D' PCB	
08-275151-001	63-B3010X-BT4	S/T SCREW B 3 X 10 BT	
08-275151-001	63-B3508X-0B4	S/T SCREW B 3.5 X 8 B HARD	
08-275151-001	63-B4020X-AB2	S/T SCREW B 4 X 20 AB	
08-275151-001	63-P3008X-0B3	S/T SCREW P 3 X 8 B (BLACK)	
08-275151-001	63-P3508X-0B4	S/T SCREW P 3.5 X 8 B	
08-275151-001	64-B3008X-102	M/C SCREW B 3 X 8	
08-275151-001	64-P3010X-104	M/C SCREW P 3 X 10	
08-275151-001	64-P3510X-102	M/C SCREW P 3.5 X 10	
08-275151-001	65-E3305X-07E	SPRING WASHER 3.3 X 5.0 X 0.7	
08-275151-001	65-Z3005X-23M	NUT M 3	
08-275151-001	65-Z3506X-26E	NUT M 3.5	
08-275151-001	67-227290-0B0	SHIELD CAN	
08-275151-001	67-237170-2A0	HEAT SINK FOR AUDIO AMP	
08-275151-001	67-242470-1M0	BRACKET M.BD L TYPE	
08-275151-001	67-264710-0A0	HEAT SINK HOR.OUTPUT	
08-275151-001	67-268550-0A0	HEAT SINK VERT	
08-275151-001	70-271510-00A	SERVICE CARD	
08-275151-001	71-270870-0A9	LABEL	
08-275151-001	90-209770-000	SILICONE GREASE G-746	
08-275151-001	90-269080-000	CLEAN COATING	

Assembly	Parts	Description	Location
<b>08-275161-001</b>	<b>ASS'Y - FAST TEST PARTS</b>		
08-275161-001	10-1N4148-AB1	DIODE 1N4148 (SWITCHING)	J716
08-275161-001	10-1N4148-AB1	DIODE 1N4148 (SWITCHING)	D701
08-275161-001	11-2N3904-0B1	TRANSISTOR 2N3904	Q701
08-275161-001	11-2N3904-0B1	TRANSISTOR 2N3904	Q702
08-275161-001	11-2N3904-0B1	TRANSISTOR 2N3904	Q703
08-275161-001	11-SC1815-YB1	TRANSISTOR 2SC1815Y	Q705
08-275161-001	11-SC1815-YB1	TRANSISTOR 2SC1815Y	Q704
08-275161-001	13-0CF702-00P	IC CF70200 EUROTTEXT DECODER	IC702
08-275161-001	13-0CF723-06P	IC CF72306 DATA SLICER	IC701
08-275161-001	18-CB0102-JNX	RES. C.F. 1K OHM 1/6W +/-5%	R706
08-275161-001	18-CB0102-JNX	RES. C.F. 1K OHM 1/6W +/-5%	R714
08-275161-001	18-CB0102-JNX	RES. C.F. 1K OHM 1/6W +/-5%	R718
08-275161-001	18-CB0102-JNX	RES. C.F. 1K OHM 1/6W +/-5%	R719
08-275161-001	18-CB0102-JNX	RES. C.F. 1K OHM 1/6W +/-5%	R720
08-275161-001	18-CB0103-JNX	RES. C.F. 10K OHM 1/6W +/-5%	R705
08-275161-001	18-CB0153-JNX	RES. C.F. 15K OHM 1/6W +/-5%	C718
08-275161-001	18-CB0222-JNX	RES. C.F. 2.2K OHM 1/6W +/-5%	C723
08-275161-001	18-CB0222-JNX	RES. C.F. 2.2K OHM 1/6W +/-5%	C724
08-275161-001	18-CB0222-JNX	RES. C.F. 2.2K OHM 1/6W +/-5%	C725
08-275161-001	18-CB0222-JNX	RES. C.F. 2.2K OHM 1/6W +/-5%	C729
08-275161-001	18-CB0331-JNX	RES. C.F. 330 OHM 1/6W +/-5%	R726
08-275161-001	18-CB0331-JNX	RES. C.F. 330 OHM 1/6W +/-5%	R727
08-275161-001	18-CB0472-JNX	RES. C.F. 4.7K OHM 1/6W +/-5%	R711
08-275161-001	18-CB0472-JNX	RES. C.F. 4.7K OHM 1/6W +/-5%	R712
08-275161-001	18-CB0472-JNX	RES. C.F. 4.7K OHM 1/6W +/-5%	R713
08-275161-001	18-CB0472-JNX	RES. C.F. 4.7K OHM 1/6W +/-5%	R725
08-275161-001	18-CB0472-JNX	RES. C.F. 4.7K OHM 1/6W +/-5%	R709
08-275161-001	18-CB0472-JNX	RES. C.F. 4.7K OHM 1/6W +/-5%	R710
08-275161-001	18-CB0682-JNX	RES. C.F. 6.8K OHM 1/6W +/-5%	R707
08-275161-001	18-CB0823-JNX	RES. C.F. 82K OHM 1/6W +/-5%	
08-275161-001	25-BCB470-M11	CAP. ELEC 47 UF 16V +/-20%	C731
08-275161-001	26-ABC101-JZX	CAP. CER 100 PF 50V +/-5% SL	C726
08-275161-001	26-ABC101-JZX	CAP. CER 100 PF 50V +/-5% SL	C727
08-275161-001	26-ABC101-JZX	CAP. CER 100 PF 50V +/-5% SL	C728
08-275161-001	26-ABC102-KBX	CAP. CER 1N PF 50V +/-10% B	C708
08-275161-001	26-ABC102-KBX	CAP. CER 1N PF 50V +/-10% B	C710
08-275161-001	26-ABC103-ZFX	CAP. CER 0.01 UF 50V +80-20% F	C702
08-275161-001	26-ABC103-ZFX	CAP. CER 0.01 UF 50V +80-20% F	C730
08-275161-001	26-ABC103-ZFX	CAP. CER 0.01 UF 50V +80-20% F	C721
08-275161-001	26-ABC104-ZFX	CAP. CER 0.1UF 50V +80-20% F	C716
08-275161-001	26-ABC104-ZFX	CAP. CER 0.1UF 50V +80-20% F	C707
08-275161-001	26-ABC104-ZFX	CAP. CER 0.1UF 50V +80-20% F	C711
08-275161-001	26-ABC104-ZFX	CAP. CER 0.1UF 50V +80-20% F	C714
08-275161-001	26-ABC104-ZFX	CAP. CER 0.1UF 50V +80-20% F	C714A
08-275161-001	26-ABC150-JCX	CAP. CER 15 PF 50V +/-5% NPO	C705
08-275161-001	26-ABC150-JCX	CAP. CER 15 PF 50V +/-5% NPO	C706
08-275161-001	26-ABC221-JZX	CAP. CER 220 PF 50V +/-5% SL	C703
08-275161-001	26-ABC221-JZX	CAP. CER 220 PF 50V +/-5% SL	C709
08-275161-001	26-ABC470-JZX	CAP. CER 47 PF 50V +/-5% SL	C712
08-275161-001	34-R101J2-0EX	COIL PL - 100 UH +/-5%	L701
08-275161-001	41-WJ0050-B00	WIRE BARE JUMPER 5MM	J702A
08-275161-001	41-WJ0050-B00	WIRE BARE JUMPER 5MM	J708
08-275161-001	41-WJ0050-B00	WIRE BARE JUMPER 5MM	R702
08-275161-001	41-WJ0075-B00	WIRE BARE JUMPER 7.5MM	J709
08-275161-001	41-WJ0075-B00	WIRE BARE JUMPER 7.5MM	J709A

Assembly	Parts	Description	Location
08-275161-001	41-WJ0075-B00	WIRE BARE JUMPER 7.5MM	J710
08-275161-001	41-WJ0075-B00	WIRE BARE JUMPER 7.5MM	J715
08-275161-001	41-WJ0075-B00	WIRE BARE JUMPER 7.5MM	J713
08-275161-001	41-WJ0075-B00	WIRE BARE JUMPER 7.5MM	J712
08-275161-001	41-WJ0075-B00	WIRE BARE JUMPER 7.5MM	J701
08-275161-001	41-WJ0075-B00	WIRE BARE JUMPER 7.5MM	J705
08-275161-001	41-WJ0075-B00	WIRE BARE JUMPER 7.5MM	J706
08-275161-001	41-WJ0075-B00	WIRE BARE JUMPER 7.5MM	J707
08-275161-001	41-WJ0075-B00	WIRE BARE JUMPER 7.5MM	J717
08-275161-001	41-WJ0100-B00	WIRE BARE JUMPER 10MM	J718
08-275161-001	41-WJ0100-B00	WIRE BARE JUMPER 10MM	J714
08-275161-001	41-WJ0125-B00	WIRE BARE JUMPER 12.5MM	J711A
08-275161-001	41-WJ0125-B00	WIRE BARE JUMPER 12.5MM	J710A
08-275161-001	41-WJ0150-B00	WIRE BARE JUMPER 15MM	J702
08-275161-001	41-WJ0150-B00	WIRE BARE JUMPER 15MM	J704
08-275161-001	45-258150-100	CRYSTAL 13.875MHZ	X701
<b>08-275171-001</b>	<b>ASS'Y - CRT BOARD</b>		
08-275171-001	10-1N4148-AB1	DIODE 1N4148 (SWITCHING)	D501
08-275171-001	10-1N4148-AB1	DIODE 1N4148 (SWITCHING)	D502
08-275171-001	10-1N4148-AB1	DIODE 1N4148 (SWITCHING)	D503
08-275171-001	10-1N4148-AB1	DIODE 1N4148 (SWITCHING)	D504
08-275171-001	11-SC1815-YB1	TRANSISTOR 2SC1815Y	Q556
08-275171-001	11-SC1815-YB1	TRANSISTOR 2SC1815Y	Q554
08-275171-001	11-SC1815-YB1	TRANSISTOR 2SC1815Y	Q555
08-275171-001	11-SC2482-0B1	TRANSISTOR 2SC2482	Q501
08-275171-001	11-SC4544-0A1	TRANSISTOR 2SC4544	Q551
08-275171-001	11-SC4544-0A1	TRANSISTOR 2SC4544	Q552
08-275171-001	11-SC4544-0A1	TRANSISTOR 2SC4544	Q553
08-275171-001	18-CB0101-JNX	RES. C.F. 100 OHM 1/6W +/-5%	R579
08-275171-001	18-CB0101-JNX	RES. C.F. 100 OHM 1/6W +/-5%	R580
08-275171-001	18-CB0101-JNX	RES. C.F. 100 OHM 1/6W +/-5%	R581
08-275171-001	18-CB0103-JNX	RES. C.F. 10K OHM 1/6W +/-5%	R501
08-275171-001	18-CB0122-JNX	RES. C.F. 1.2K OHM 1/6W +/-5%	R564
08-275171-001	18-CB0122-JNX	RES. C.F. 1.2K OHM 1/6W +/-5%	R565
08-275171-001	18-CB0122-JNX	RES. C.F. 1.2K OHM 1/6W +/-5%	R566
08-275171-001	18-CB0150-JNX	RES. C.F. 15 OHM 1/6W +/-5%	R570
08-275171-001	18-CB0150-JNX	RES. C.F. 15 OHM 1/6W +/-5%	R571
08-275171-001	18-CB0150-JNX	RES. C.F. 15 OHM 1/6W +/-5%	R572
08-275171-001	18-CB0151-JNX	RES. C.F. 150 OHM 1/6W +/-5%	R567
08-275171-001	18-CB0151-JNX	RES. C.F. 150 OHM 1/6W +/-5%	R568
08-275171-001	18-CB0151-JNX	RES. C.F. 150 OHM 1/6W +/-5%	R569
08-275171-001	18-CB0330-JNX	RES. C.F. 33 OHM 1/6W +/-5%	R502
08-275171-001	18-CB0330-JNX	RES. C.F. 33 OHM 1/6W +/-5%	R503
08-275171-001	18-CB0332-JNX	RES. C.F. 3.3K OHM 1/6W +/-5%	R582
08-275171-001	18-CB0332-JNX	RES. C.F. 3.3K OHM 1/6W +/-5%	R583
08-275171-001	18-CB0332-JNX	RES. C.F. 3.3K OHM 1/6W +/-5%	R584
08-275171-001	18-CB0391-JNX	RES. C.F. 390 OHM 1/6W +/-5%	R557
08-275171-001	18-CB0391-JNX	RES. C.F. 390 OHM 1/6W +/-5%	R558
08-275171-001	18-CB0391-JNX	RES. C.F. 390 OHM 1/6W +/-5%	R559
08-275171-001	18-CB0471-JNX	RES. C.F. 470 OHM 1/6W +/-5%	R554
08-275171-001	18-CB0471-JNX	RES. C.F. 470 OHM 1/6W +/-5%	R555
08-275171-001	18-CB0471-JNX	RES. C.F. 470 OHM 1/6W +/-5%	R556
08-275171-001	18-CE0154-JNX	RES. C.F. 150K OHM 1/2W +/-5%	R576
08-275171-001	18-CE0154-JNX	RES. C.F. 150K OHM 1/2W +/-5%	R577
08-275171-001	18-CE0154-JNX	RES. C.F. 150K OHM 1/2W +/-5%	R578
08-275171-001	18-CE0222-JNX	RES. C.F. 2.2K OHM 1/2W +/-5%	R573

Assembly	Parts	Description	Location
08-275171-001	18-CE0222-JNX	RES. C.F. 2.2K OHM 1/2W +/-5%	R574
08-275171-001	18-CE0222-JNX	RES. C.F. 2.2K OHM 1/2W +/-5%	R575
08-275171-001	18-FE0121-JXX	RES. M.O. 120 OHM 1/2W +/-5%	R593
08-275171-001	18-FH0822-JI1	RES. M.O. 8.2K OHM 3W +/-5%	R551
08-275171-001	18-FH0822-JI1	RES. M.O. 8.2K OHM 3W +/-5%	R552
08-275171-001	18-FH0822-JI1	RES. M.O. 8.2K OHM 3W +/-5%	R553
08-275171-001	20-216050-302	TRIMMER B3K VERT TYPE (8MM)	VR551
08-275171-001	20-216050-302	TRIMMER B3K VERT TYPE (8MM)	VR552
08-275171-001	20-216050-302	TRIMMER B3K VERT TYPE (8MM)	VR553
08-275171-001	20-216050-302	TRIMMER B3K VERT TYPE (8MM)	VR554
08-275171-001	20-216050-302	TRIMMER B3K VERT TYPE (8MM)	VR555
08-275171-001	25-BCA102-M11	CAP. ELEC 1000 UF 16V +/-20%	C501
08-275171-001	25-BCB101-M11	CAP. ELEC 100 UF 16V +/-20%	C566
08-275171-001	25-BFB478-M11	CAP. ELEC 0.47 UF 50V +/-20%	C502
08-275171-001	25-BLA100-M11	CAP. ELEC 10 UF 250V +/-20%	C570
08-275171-001	26-ABC102-KBX	CAP. CER 1N PF 50V +/-10% B	C554
08-275171-001	26-ABC102-KBX	CAP. CER 1N PF 50V +/-10% B	C555
08-275171-001	26-ABC102-KBX	CAP. CER 1N PF 50V +/-10% B	C556
08-275171-001	26-ABC103-ZFX	CAP. CER 0.01 UF 50V +80-20% F	C567
08-275171-001	26-ABC331-JZX	CAP. CER 330 PF 50V +/-5% S	C551
08-275171-001	26-ABC331-JZX	CAP. CER 330 PF 50V +/-5% S	C552
08-275171-001	26-ABC331-JZX	CAP. CER 330 PF 50V +/-5% S	C553
08-275171-001	26-AMK102-KR1	CAP. CER 1000 PF 2KV +/-10% R	C568
08-275171-001	34-R150J2-0EX	COIL PL - 15 UH +/-5%	L557
08-275171-001	34-R220K2-1CX	COIL CHOKE 22 UH +/-10%	L501
08-275171-001	34-R220K2-1CX	COIL CHOKE 22 UH +/-10%	L502
08-275171-001	34-R300J2-0EX	COIL PL - 30 UH +/-5%	L554
08-275171-001	34-R300J2-0EX	COIL PL - 30 UH +/-5%	L555
08-275171-001	34-R300J2-0EX	COIL PL - 30 UH +/-5%	L556
08-275171-001	34-R470J2-0EX	COIL PL - 47 UH +/-5%	L551
08-275171-001	34-R470J2-0EX	COIL PL - 47 UH +/-5%	L552
08-275171-001	34-R470J2-0EX	COIL PL - 47 UH +/-5%	L553
08-275171-001	40-275120-0AC	P.C.B. CRT BD	
08-275171-001	41-WJ0075-B00	WIRE BARE JUMPER 7.5MM	J502
08-275171-001	41-WJ0150-B00	WIRE BARE JUMPER 15MM	J503
08-275171-001	46-10967W-017	PIN BASE *1 TJC1-1A	P501
08-275171-001	46-20389H-047	HS 4P24 460/5 F/W TJC3-4Y	P401H
08-275171-001	46-27240H-057	HS 5P24 450 F/W TJC3-5Y/SCN-5	P201H
08-275171-001	47-265540-0UX	SOCKET CRT GZS10-2-1G 29.1HB	S501
08-275171-001	54-128372-000	FIBRE TUBE D=1MM L=10MM	
<b>08-275210-001</b>	<b>ASS'Y - FRONT CABINET</b>		
08-275210-001	02-271380-00X	ASS'Y-CRT GND WIRE & HOUS.(29)	
08-275210-001	36-214681-001	DEGAUSSING COIL 3300 +/-10MM	
08-275210-001	42-263520-006	SPEAKER 76 X 127 MM 8 OHM 8W	SP602
08-275210-001	42-263520-006	SPEAKER 76 X 127 MM 8 OHM 8W	SP603
08-275210-001	44-276600-000	CRT 74CM A68JQP95X05 (ZX)	
08-275210-001	46-13850H-027	HS 2P22B 750/5 WH BK	P603H
08-275210-001	46-21577H-027	HS 2P22B 580/5 RD BK	P602H
08-275210-001	46-26514H-047	HS 4P A/B 500/13 RBGW TJC1-4Y	P421
08-275210-001	48-259140-00X	SW. DOOR LOCK PR4	
08-275210-001	54-113971-0UA	PVC TUBE #6 L=270MM	
08-275210-001	54-114000-00X	FELT TAPE 150X19MM	
08-275210-001	54-205140-000	SPACER CRT MOUNTING T=2MM	
08-275210-001	54-268340-000	SPONGE CUSHION 15 X 45 X 3MM	
08-275210-001	55-256270-0CAAB	CABINET FRONT	
08-275210-001	55-256280-0HHAD	DOOR	

Assembly	Parts	Description	Location
08-275210-001	55-256290-0HCAO	LEFT FRONT PANEL	
08-275210-001	55-256300-0HCAE	RIGHT FRONT PANEL	
08-275210-001	56-250220-0HAAA	PUSH BUTTON	
08-275210-001	56-256310-0HCAB	POWER KNOB	
08-275210-001	56-25924P-0HNAA	SPEAKER GRILLE	
08-275210-001	58-25720S-2UIAB	INLAY FRONT CONTROL	
08-275210-001	59-130460-00X	RUBBER PAD 25MM X 7MM	
08-275210-001	62-10654X-00F	UNI - TIE 2.5X95MM	
08-275210-001	62-200980-0HA	MOUNTING POST	
08-275210-001	62-200990-0HA	CABINET SIDE CATCHER	
08-275210-001	62-216340-0HA	HOLDER AC POWER CORD	
08-275210-001	62-250170-0HD	LEFT HOLDER	
08-275210-001	62-250180-0HD	RIGHT HOLDER	
08-275210-001	62-25021P-0HA	HOLDER COVER	
08-275210-001	62-250270-0HA	MOUNTING POST 29'	
08-275210-001	62-256330-0HA	MAIN BD TRACK 'A'	
08-275210-001	62-256340-0HA	MAIN BD TRACK 'B'	
08-275210-001	62-256360-0HA	POWER BD TRACK 'A'	
08-275210-001	62-256370-0HA	POWER BD TRACK 'B'	
08-275210-001	62-256380-0HA	MAIN BD HOLDER	
08-275210-001	62-256400-0HG	CRT SPACER 'A'	
08-275210-001	62-256410-0HG	CRT SPACER 'B'	
08-275210-001	62-268090-0HA	SPACER - SPEAKER HOUSING	
08-275210-001	62-271770-0HN	FRONT SPEAKER HOUSING	
08-275210-001	62-271780-0HN	BRACKET FRONT SPEAKER	
08-275210-001	63-B2608X-AB2	S/T SCREW B 2.6 X 8 AB	
08-275210-001	63-B3010X-BT4	S/T SCREW B 3 X 10 BT	
08-275210-001	63-B3010X-BT4	S/T SCREW B 3 X 10 BT	
08-275210-001	63-B3010X-BT4	S/T SCREW B 3 X 10 BT	
08-275210-001	63-B3010X-BT4	S/T SCREW B 3 X 10 BT	
08-275210-001	63-B3010X-BT4	S/T SCREW B 3 X 10 BT	
08-275210-001	63-B3010X-BT4	S/T SCREW B 3 X 10 BT	
08-275210-001	63-B4020X-AB2	S/T SCREW B 4 X 20 AB	
08-275210-001	63-B4025X-AB4	S/T SCREW B 4 X 25 AB	
08-275210-001	63-B6025X-AB4	S/T SCREW B 6 X 25 AB	
08-275210-001	63-W3012X-AB4	S/T SCREW W 3 X 12 AB	
08-275210-001	65-A60180-20E	EXT. TOOTH WASHTER 6X18X2	
08-275210-001	67-216790-0I0	SPRING 6 X 50 X 0.6MM	
08-275210-001	67-250450-0E0	SPRING KNOB	
08-275210-001	67-274400-0A0	LOGO ALUMINUM (TEAC)	
08-275210-001	71-278160-0A0AB	LABEL STICKER (CT-M689ST)	
08-275210-001	74-112112-6YC	POLYBAG W/SUFFOCATION WARNING	
08-275210-001	89-263000-003	DOUBLE SIDE TAPE 55.8 X429.3MM	
<b>08-275220-001</b>	<b>ASS'Y - REAR CABINET</b>		
08-275220-001	54-114000-00X	FELT TAPE 150X19MM	
08-275220-001	55-250110-0ANAA	CABINET REAR	
08-275220-001	56-239720-0HN	REAR SPEAKER COVER R	
08-275220-001	56-239730-0HN	REAR SPEAKER COVER L	
08-275220-001	58-11484S-0UIIF	MODEL NO. PLATE (CT-M689ST)	
08-275220-001	58-25690S-2UIAD	INLAY TERMINAL BOARD	
08-275220-001	59-130460-00X	RUBBER PAD 25MM X 7MM	
08-275220-001	59-130460-00X	RUBBER PAD 25MM X 7MM	
08-275220-001	62-228400-0HG	HOLDER - POWER CABLE	
08-275220-001	63-B4020X-AB3	S/T SCREW B 4 X 20 AB (BLACK)	
08-275220-001	63-P3512X-0B4	S/T SCREW P 3.5 X 12 B	
08-275220-001	64-B3012X-103	M/C SCREW B 3 X 12	
08-275220-001	67-24180P-0E0	SPEAKER GRILLE	



Assembly	Parts	Description	Location
08-275220-001	71-276630-0A0AA	LABEL SERVICE STATION (TEAC)	
<b>08-275270-001</b>	<b>ASS'Y - POWER SWITCH BOARD</b>		
08-275270-001	18-BE0105-KN1	RES. C.C. 1M OHM 1/2W +/-10%	R801S
08-275270-001	27-AQT224-MV1	CAP. M.PP 0.22UF 250VAC +/-20%	C801S
08-275270-001	40-256910-0AB	P.C.B. POWER SW BD	
08-275270-001	46-11376W-037	PIN BASE *3 TJC2-3A	P801S
08-275270-001	48-256460-0C0	SW. POWER TV8 (PCB MOUNTING)	
08-275270-001	50-26931D-1VS	FUSE 3.15AT 250V 5X20MM BELL	F801S
08-275270-001	51-JC0243-0CC	POWER CORD 8FT W/PIN TERM. SAA	
08-275270-001	54-113971-0U4	PVC TUBE #6 L=20MM	
08-275270-001	62-256350-0HA	POWER SWITCH HOLDER	
08-275270-001	62-262660-0HA	POWER SW. ADAPTOR	
08-275270-001	63-B3010X-BT4	S/T SCREW B 3 X 10 BT	
08-275270-001	66-20516X-0B8	FUSE HOLDER	
08-275270-001	74-010050-40C	POLYBAG FOR POWER CORD	
<b>08-275280-001</b>	<b>ASS'Y - PACKING</b>		
08-275280-001	49-268110-000	BATTERY AA SIZE CARBON ZINC	
08-275280-001	70-278170-00AAB	EASY TUNE CARD (CT-M689ST)	
08-275280-001	70-278190-00AAA	WARRANTY CARD (TEAC)	
08-275280-001	70-281020-00AAA	TOTAL CARE SHEET (TEAC)	
08-275280-001	71-278150-0A0AB	LABEL V-NO. (CT-M689ST) 1X2PCS	
08-275280-001	71-278180-0A0AB	LABEL SERIAL NO. (1X4 PCS)	
08-275280-001	71-278860-0A0AA	LABEL BAR CODE.CT-M689ST 1X2PC	
08-275280-001	72-2988HM-EYFAA	OPERATION MANUAL (CT-M689ST)	
08-275280-001	74-022032-6WE	POLYBAG 22 X 32CM	
08-275280-001	74-112112-6YC	POLYBAG W/SUFFOCATION WARNING	
08-275280-001	75-256950-C00	POLYFOAM 'UL'	
08-275280-001	75-256960-C00	POLYFOAM 'UR'	
08-275280-001	75-256970-C00	POLYFOAM 'LL'	
08-275280-001	75-256980-C00	POLYFOAM 'LR'	
08-275280-001	76-25035X-02ABB	CARTON BOX (CT-M689ST)	
<b>08-275660-001</b>	<b>ASS'Y - TERMINAL BOARD</b>		
08-275660-001	18-CB0750-JNX	RES. C.F. 75 OHM 1/6W +/-5%	R91
08-275660-001	18-CB0750-JNX	RES. C.F. 75 OHM 1/6W +/-5%	R92
08-275660-001	26-ABC101-JZX	CAP. CER 100 PF 50V +/-5% SL	C91
08-275660-001	26-ABC101-JZX	CAP. CER 100 PF 50V +/-5% SL	C92
08-275660-001	40-278380-0AA	P.C.B. AV BD	
08-275660-001	41-WJ0125-B00	WIRE BARE JUMPER 12.5MM	J931
08-275660-001	41-WJ0150-B00	WIRE BARE JUMPER 15MM	J933
08-275660-001	46-24671H-127	HS 12P24 180 TJC3-12Y/SCN-6Y	P901H
08-275660-001	47-214700-0UX	JACK RCA JPJ2022-01-020 RED	P922
08-275660-001	47-214710-0UX	JACK RCA JPJ2022-01-030 WHITE	P921
08-275660-001	47-214710-0UX	JACK RCA JPJ2022-01-030 WHITE	P911
08-275660-001	47-214720-0UX	JACK RCA JPJ2022-01-040 YELLOW	P913
08-275660-001	47-214720-0UX	JACK RCA JPJ2022-01-040 YELLOW	P923
08-275660-001	47-239300-00X	JACK RCA JPJ5022-01-020 RED	P912
08-275660-001	54-128700-0X0	FIBRE WASHER 3.3 X 10 X 0.8	
08-275660-001	62-256420-0HA	BRACKET TERMINAL	
08-275660-001	63-B3008X-0B4	S/T SCREW B 3 X 8 B	
08-275660-001	63-P3508X-0B4	S/T SCREW P 3.5 X 8 B	
08-275660-001	67-134480-2E2	NUT INSERTING	
<b>08-275980-001</b>	<b>ASS'Y - S. WOOFER BOARD</b>		
08-275980-001	10-1N4001-EB1	DIODE 1N4001 (RECTIFIER)	SD01

Assembly	Parts	Description	Location
08-275980-001	13-00LM35-8NP	IC LM358N	SIC01
08-275980-001	13-TDA200-9AS	IC TDA2009A (AUDIO O/P)	SIC02
08-275980-001	18-CB0102-JNX	RES. C.F. 1K OHM 1/6W +/-5%	SR18
08-275980-001	18-CB0103-JNX	RES. C.F. 10K OHM 1/6W +/-5%	SR04
08-275980-001	18-CB0103-JNX	RES. C.F. 10K OHM 1/6W +/-5%	SR06
08-275980-001	18-CB0104-JNX	RES. C.F. 100K OHM 1/6W +/-5%	SR09
08-275980-001	18-CB0104-JNX	RES. C.F. 100K OHM 1/6W +/-5%	SR10
08-275980-001	18-CB0109-JNX	RES. C.F. 1 OHM 1/6W +/-5%	SR19
08-275980-001	18-CB0109-JNX	RES. C.F. 1 OHM 1/6W +/-5%	SR20
08-275980-001	18-CB0202-JNX	RES. C.F. 2K OHM 1/6W +/-5%	SR17
08-275980-001	18-CB0223-JNX	RES. C.F. 22K OHM 1/6W +/-5%	SR12
08-275980-001	18-CB0223-JNX	RES. C.F. 22K OHM 1/6W +/-5%	SR13
08-275980-001	18-CB0223-JNX	RES. C.F. 22K OHM 1/6W +/-5%	SR14
08-275980-001	18-CB0390-JNX	RES. C.F. 39 OHM 1/6W +/-5%	SR15
08-275980-001	18-CB0390-JNX	RES. C.F. 39 OHM 1/6W +/-5%	SR16
08-275980-001	18-CB0473-JNX	RES. C.F. 47K OHM 1/6W +/-5%	SR11
08-275980-001	18-CB0473-JNX	RES. C.F. 47K OHM 1/6W +/-5%	SR01
08-275980-001	18-CB0473-JNX	RES. C.F. 47K OHM 1/6W +/-5%	SR02
08-275980-001	18-CB0473-JNX	RES. C.F. 47K OHM 1/6W +/-5%	SR03
08-275980-001	18-CB0473-JNX	RES. C.F. 47K OHM 1/6W +/-5%	SR07
08-275980-001	18-CB0473-JNX	RES. C.F. 47K OHM 1/6W +/-5%	SR08
08-275980-001	18-CB0823-JNX	RES. C.F. 82K OHM 1/6W +/-5%	SR05
08-275980-001	18-FG0229-JH1	RES. M.O. 2.2 OHM 2W +/-5%	SR00
08-275980-001	25-BCA102-M11	CAP. ELEC 1000 UF 16V +/-20%	SC05
08-275980-001	25-BCB100-M11	CAP. ELEC 10 UF 16V +/-20%	SC03
08-275980-001	25-BCB100-M11	CAP. ELEC 10 UF 16V +/-20%	SC07
08-275980-001	25-BCB100-M11	CAP. ELEC 10 UF 16V +/-20%	SC29
08-275980-001	25-BCB221-M11	CAP. ELEC 220 UF 16V +/-20%	SC22
08-275980-001	25-BCB221-M11	CAP. ELEC 220 UF 16V +/-20%	SC24
08-275980-001	25-BEA220-M11	CAP. ELEC 22 UF 35V +/-20%	SC21
08-275980-001	25-BEA222-M11	CAP. ELEC 2200 UF 35V +/-20%	SC28
08-275980-001	25-BFB229-M11	CAP. ELEC 2.2 UF 50V +/-20%	SC23
08-275980-001	25-BFB478-M11	CAP. ELEC 0.47 UF 50V +/-20%	SC20
08-275980-001	25-BFB478-M11	CAP. ELEC 0.47 UF 50V +/-20%	SC09
08-275980-001	26-ABC103-ZFX	CAP. CER 0.01 UF 50V +80-20% F	SC27
08-275980-001	26-ABC104-ZFX	CAP. CER 0.1UF 50V +80-20% F	SC30
08-275980-001	26-ABC104-ZFX	CAP. CER 0.1UF 50V +80-20% F	SC02
08-275980-001	26-ABC104-ZFX	CAP. CER 0.1UF 50V +80-20% F	SC01
08-275980-001	26-ABC223-ZFX	CAP. CER 0.022UF 50V +80-20% F	SC04
08-275980-001	26-ABC223-ZFX	CAP. CER 0.022UF 50V +80-20% F	SC32
08-275980-001	26-ABC223-ZFX	CAP. CER 0.022UF 50V +80-20% F	SC06
08-275980-001	26-ABC223-ZFX	CAP. CER 0.022UF 50V +80-20% F	SC08
08-275980-001	27-MBC104-J01	CAP. M. P.E. 0.1 UF 50V +/-5%	SC25
08-275980-001	27-MBC104-J01	CAP. M. P.E. 0.1 UF 50V +/-5%	SC26
08-275980-001	40-275560-0AC	P.C.B. S. WOOFER AMPL BD	
08-275980-001	46-11376W-037	PIN BASE *3 TJC2-3A	SP05
08-275980-001	46-12210W-037	PIN BASE *3 TJC3-3A	SP03
08-275980-001	46-13541W-057	PIN BASE *5 TJC3-5A	SP01
08-275980-001	46-27325H-027	HS 2P24 200 F/W SCN2Y-SM2R YL	SP04
08-275980-001	62-208320-00F	SPACER NICAM & ST PCB	
08-275980-001	67-273420-2A0	HEAT SINK (A=40 C=12.5)	
<b>08-276690-001</b>	<b>ASS'Y - POWER BOARD</b>		
08-276690-001	10-00EG1Z-E01	DIODE EG1Z (FAST RECOVERY)	D803
08-276690-001	10-00EU1Z-E01	DIODE EU1Z (FAST RECOVERY)	D804
08-276690-001	10-00EU1Z-E01	DIODE EU1Z (FAST RECOVERY)	D805
08-276690-001	10-00RG2Y-E01	DIODE RG2Y (FAST RECOVERY)	D809

Assembly	Parts	Description	Location
08-276690-001	10-0FR104-EB1	DIODE FR104 (FAST RECOVERY)	D808
08-276690-001	10-0FR104-EB1	DIODE FR104 (FAST RECOVERY)	D810
08-276690-001	10-0FR104-EB1	DIODE FR104 (FAST RECOVERY)	D811
08-276690-001	10-0RU3AM-E01	DIODE RU3AM (FAST RECOVERY)	D807
08-276690-001	10-0RU4YX-E01	DIODE RU4YX (FAST RECOVERY)	D806
08-276690-001	10-79C12V-DB1	DIODE ZENER 12V 1/2W 5%	D812
08-276690-001	10-79C16V-DB1	DIODE ZENER 16V 1/2W 5%	D815
08-276690-001	10-D3SB60-H71	DIODE D3SB60 (BRIDGE RECT.)	D800
08-276690-001	10-HZ9LA3-DB1	DIODE ZENER 8.1V-8.5V 1/2W	D813
08-276690-001	11-2SA817-AA1	TRANSISTOR 2SA817AY	Q801
08-276690-001	11-SC2230-YB1	TRANSISTOR 2SC2230Y	Q803
08-276690-001	11-SC3852-AA1	TRANSISTOR 2SC3852-A HIGH HF	Q802
08-276690-001	11-SC3852-AA1	TRANSISTOR 2SC3852-A HIGH HF	Q804
08-276690-001	13-00SE14-0NS	IC SE140N	IC802
08-276690-001	13-STRS63-09S	IC STRS6309 - LF953	IC801
08-276690-001	15-00TLP6-21C	PHOTO COUPLER TLP621 (GRH)	IC803
08-276690-001	18-BE0475-KN1	RES. C.C. 4.7M OHM 1/2W +/-10%	R815
08-276690-001	18-BE0475-KN1	RES. C.C. 4.7M OHM 1/2W +/-10%	R815A
08-276690-001	18-CB0333-JNX	RES. C.F. 33K OHM 1/6W +/-5%	R851
08-276690-001	18-CB0333-JNX	RES. C.F. 33K OHM 1/6W +/-5%	R835
08-276690-001	18-CD0101-JNX	RES. C.F. 100 OHM 1/4W +/-5%	R812
08-276690-001	18-CD0101-JNX	RES. C.F. 100 OHM 1/4W +/-5%	R812A
08-276690-001	18-CD0101-JNX	RES. C.F. 100 OHM 1/4W +/-5%	R825
08-276690-001	18-CD0101-JNX	RES. C.F. 100 OHM 1/4W +/-5%	R825A
08-276690-001	18-CD0102-JNX	RES. C.F. 1K OHM 1/4W +/-5%	R816
08-276690-001	18-CD0102-JNX	RES. C.F. 1K OHM 1/4W +/-5%	R816A
08-276690-001	18-CD0151-JNX	RES. C.F. 150 OHM 1/4W +/-5%	R828
08-276690-001	18-CD0223-JNX	RES. C.F. 22K OHM 1/4W +/-5%	R804
08-276690-001	18-CD0241-JNX	RES. C.F. 240 OHM 1/4W +/-5%	R813
08-276690-001	18-CD0241-JNX	RES. C.F. 240 OHM 1/4W +/-5%	R813A
08-276690-001	18-CD0332-JNX	RES. C.F. 3.3K OHM 1/4W +/-5%	R824
08-276690-001	18-CD0333-JNX	RES. C.F. 33K OHM 1/4W +/-5%	R814
08-276690-001	18-CD0681-JNX	RES. C.F. 680 OHM 1/4W +/-5%	R809
08-276690-001	18-CE0332-JNX	RES. C.F. 3.3K OHM 1/2W +/-5%	R818
08-276690-001	18-DF0109-JGX	RES. M.F. 1 OHM 1W +/-5%	R811
08-276690-001	18-EG0109-JH1	RES. FUS 1 OHM 2W +/-5%	R833
08-276690-001	18-FF0102-JGX	RES. M.O. 1K OHM 1W +/-5%	R832
08-276690-001	18-FG0104-JH1	RES. M.O. 100K OHM 2W +/-5%	R803
08-276690-001	18-FG0159-JH1	RES. M.O. 1.5 OHM 2W +/-5%	R831
08-276690-001	18-FG0159-JH1	RES. M.O. 1.5 OHM 2W +/-5%	R831A
08-276690-001	18-FG0183-JH1	RES. M.O. 18K OHM 2W +/-5%	R830
08-276690-001	18-FG0278-JH1	RES. M.O. 0.27 OHM 2W +/-5%	R810
08-276690-001	18-FH0103-JI1	RES. M.O. 10K OHM 3W +/-5%	R826
08-276690-001	18-FH0270-JI1	RES. M.O. 27 OHM 3W +/-5%	R807
08-276690-001	18-FJ0220-JI1	RES. M.O. 22 OHM 5W +/-5%	R806
08-276690-001	18-GM0339-KT1	RES. CEMENT 3.3 OHM 7W +/-10%	R802
08-276690-001	22-G200N2-702	POSISTOR PTH451C262BG200N270	RT800
08-276690-001	25-BCA222-M11	CAP. ELEC 2200 UF 16V +/-20%	C826
08-276690-001	25-BCB101-M11	CAP. ELEC 100 UF 16V +/-20%	C832
08-276690-001	25-BDA471-M11	CAP. ELEC 470 UF 25V +/-20%	C829
08-276690-001	25-BEG222-M11	CAP. ELEC 2200 UF 35V +/-20%	C813
08-276690-001	25-BJA220-M11	CAP. ELEC 22 UF 160V +/-20%	C815
08-276690-001	25-BJA330-M11	CAP. ELEC 33 UF 160V +/-20%	C823
08-276690-001	25-BJA470-M11	CAP. ELEC 47 UF 160V +/-20%	C814
08-276690-001	25-BKJ221-M11	CAP. ELEC 220 UF 200V +/-20%	C820
08-276690-001	25-BMJ221-M11	CAP. ELEC 220 UF 400V +/-20%	C810
08-276690-001	26-ABC104-ZFX	CAP. CER 0.1UF 50V +80-20% F	C825

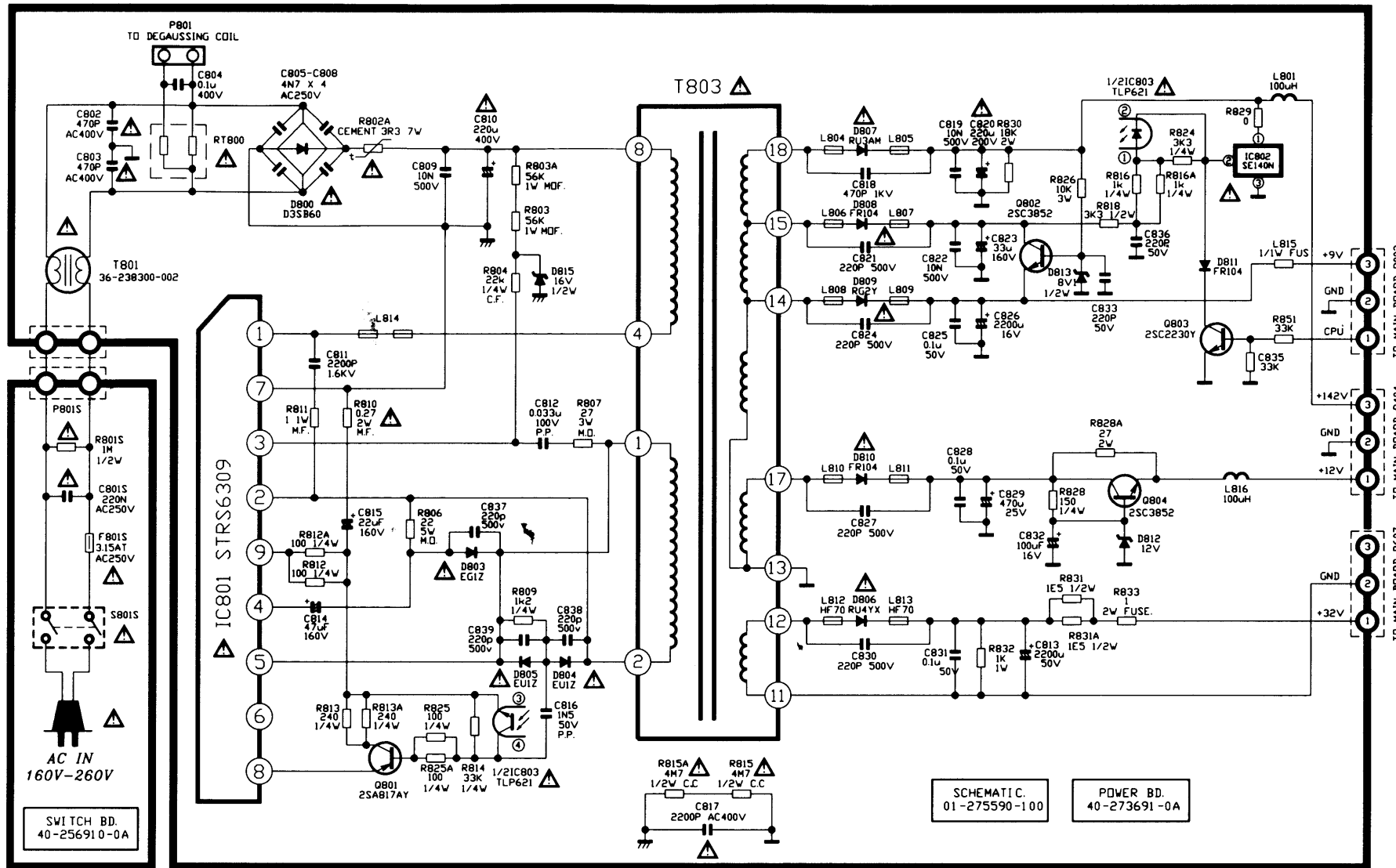
Assembly	Parts	Description	Location
08-276690-001	26-ABC104-ZFX	CAP. CER 0.1UF 50V +80-20% F	C828
08-276690-001	26-ABC104-ZFX	CAP. CER 0.1UF 50V +80-20% F	C831
08-276690-001	26-ABC221-JZX	CAP. CER 220 PF 50V +/-5% SL	C833
08-276690-001	26-ABC221-JZX	CAP. CER 220 PF 50V +/-5% SL	C836
08-276690-001	26-AIC221-KBX	CAP. CER 220 PF 500V +/-10% B	C839
08-276690-001	26-AIC221-KBX	CAP. CER 220 PF 500V +/-10% B	C824
08-276690-001	26-AIC221-KBX	CAP. CER 220 PF 500V +/-10% B	C827
08-276690-001	26-AIC221-KBX	CAP. CER 220 PF 500V +/-10% B	C830
08-276690-001	26-AIC221-KBX	CAP. CER 220 PF 500V +/-10% B	C837
08-276690-001	26-AIC221-KBX	CAP. CER 220 PF 500V +/-10% B	C838
08-276690-001	26-AIM103-KBX	CAP. CER 0.01 UF 500V +/-10% B	C809
08-276690-001	26-AIM103-KBX	CAP. CER 0.01 UF 500V +/-10% B	C819
08-276690-001	26-AIM103-KBX	CAP. CER 0.01 UF 500V +/-10% B	C822
08-276690-001	26-AKK471-KB1	CAP. CER 470 PF 1KV +/-10% B	C818
08-276690-001	26-AKK471-KB1	CAP. CER 470 PF 1KV +/-10% B	C821
08-276690-001	26-APK222-MEJ	CAP. CER 2200PF 400VAC+/-20% E	C817
08-276690-001	26-APK471-KBJ	CAP. CER 470PF 400VAC +/-10% B	C802
08-276690-001	26-APK471-KBJ	CAP. CER 470PF 400VAC +/-10% B	C803
08-276690-001	26-AQK472-ZF1	CAP.CER 4700PF 250VAC +80-20%F	C805
08-276690-001	26-AQK472-ZF1	CAP.CER 4700PF 250VAC +80-20%F	C806
08-276690-001	26-AQK472-ZF1	CAP.CER 4700PF 250VAC +80-20%F	C807
08-276690-001	26-AQK472-ZF1	CAP.CER 4700PF 250VAC +80-20%F	C808
08-276690-001	27-ALQ222-J01	CAP. M.PP 0.0022UF 1.6KV +/-5%	C811
08-276690-001	27-MHW104-K01	CAP. METAL P.E. 0.1UF 400V 10%	C804
08-276690-001	27-PBC102-J01	CAP. P.E. 0.001 UF 50V +/-5%	C816
08-276690-001	27-RCK333-J01	CAP. PP 0.033UF 100V +/-5%	C812
08-276690-001	34-R101K2-1BX	COIL CHOKE 100 UH +/-10%	L801
08-276690-001	34-R101K2-1BX	COIL CHOKE 100 UH +/-10%	L816
08-276690-001	35-139730-00X	FERR. BEAD BF60	L804
08-276690-001	35-139730-00X	FERR. BEAD BF60	L805
08-276690-001	35-139730-00X	FERR. BEAD BF60	L806
08-276690-001	35-139730-00X	FERR. BEAD BF60	L807
08-276690-001	35-139730-00X	FERR. BEAD BF60	L808
08-276690-001	35-139730-00X	FERR. BEAD BF60	L809
08-276690-001	35-139730-00X	FERR. BEAD BF60	L810
08-276690-001	35-139730-00X	FERR. BEAD BF60	L811
08-276690-001	35-139730-00X	FERR. BEAD BF60	L814
08-276690-001	35-237250-00X	FERR. BEAD HF70	L812
08-276690-001	35-237250-00X	FERR. BEAD HF70	L813
08-276690-001	36-238300-A02	LINE FILTER	T801
08-276690-001	36-274820-002	TRANSF. CONVERTER	T803
08-276690-001	40-273691-0AB	P.C.B. POWER BD	
08-276690-001	41-AJ0050-BEE	WIRE BARE JUMPER 5MM	L815
08-276690-001	41-AJ0050-BEE	WIRE BARE JUMPER 5MM	L818
08-276690-001	41-AJ0050-BEE	WIRE BARE JUMPER 5MM	L819
08-276690-001	41-AJ0075-BEE	WIRE BARE JUMPER 7.5MM	D830
08-276690-001	41-AJ0100-BEE	WIRE BARE JUMPER 10MM	J804
08-276690-001	41-AJ0100-BEE	WIRE BARE JUMPER 10MM	J805
08-276690-001	41-AJ0100-BEE	WIRE BARE JUMPER 10MM	J812
08-276690-001	41-AJ0100-BEE	WIRE BARE JUMPER 10MM	J817
08-276690-001	41-AJ0100-BEE	WIRE BARE JUMPER 10MM	J807
08-276690-001	41-AJ0100-BEE	WIRE BARE JUMPER 10MM	J806
08-276690-001	41-AJ0100-BEE	WIRE BARE JUMPER 10MM	J809
08-276690-001	41-AJ0100-BEE	WIRE BARE JUMPER 10MM	J810
08-276690-001	41-AJ0100-BEE	WIRE BARE JUMPER 10MM	J811
08-276690-001	41-AJ0100-BEE	WIRE BARE JUMPER 10MM	J808
08-276690-001	41-AJ0100-BEE	WIRE BARE JUMPER 10MM	F801

Assembly	Parts	Description	Location
08-276690-001	41-AJ0125-BEE	WIRE BARE JUMPER 12.5MM	J803
08-276690-001	41-AJ0125-BEE	WIRE BARE JUMPER 12.5MM	J813
08-276690-001	41-AJ0125-BEE	WIRE BARE JUMPER 12.5MM	D831
08-276690-001	41-AJ0150-BEE	WIRE BARE JUMPER 15MM	R803A
08-276690-001	41-AJ0175-BEE	WIRE BARE JUMPER 17.5MM	R831
08-276690-001	41-AJ0200-BEE	WIRE BARE JUMPER 20MM	J802
08-276690-001	41-AJ0200-BEE	WIRE BARE JUMPER 20MM	J802A
08-276690-001	41-AJ0200-BEE	WIRE BARE JUMPER 20MM	J801
08-276690-001	41-RE0260-1BB	WIRE UL 1672 #22 260MM BROWN	
08-276690-001	46-10962W-027	PIN BASE *2 TJC2-2A	P801
08-276690-001	46-24767H-037	HS 3P22 520/7 GN RD TJC2-3Y	P404H
08-276690-001	46-24768H-037	HS 3P22 330/7 BE BK TJC2-3Y	P607H
08-276690-001	46-27157H-037	HS 3P24 330/5 F/W TJC3-3Y	P002H
08-276690-001	46-27361H-037	HS 3P22B 450/7 BN BE TJC2-3Y	
08-276690-001	54-128372-000	FIBRE TUBE D=1MM L=10MM	
08-276690-001	62-10654X-00F	UNI - TIE 2.5X95MM	
08-276690-001	62-234570-0UA	BRACKET POWER BD	
08-276690-001	62-269980-0HG	CABLE CLAMP	
08-276690-001	63-B3008X-0B4	S/T SCREW B 3 X 8 B	
08-276690-001	64-B3008X-102	M/C SCREW B 3 X 8	
08-276690-001	64-P3014X-102	M/C SCREW P 3 X 14	
08-276690-001	65-E3305X-07E	SPRING WASHER 3.3 X 5.0 X 0.7	
08-276690-001	67-344236-3A0	HEAT SINK (A=80 D=29 E=26)	
08-276690-001	67-344647-2A0	HEAT SINK (H=60MM)	
08-276690-001	71-242640-0A2	LABEL WARNING LIVE PARTS	
08-276690-001	90-209770-000	SILICONE GREASE G-746	
<b>08-277160-001</b>	<b>ASS'Y - FRONT CONTROL BOARD</b>		
08-277160-001	14-255670-LR2	LED RED L- 53ID	DK01
08-277160-001	18-CB0100-JNX	RES. C.F. 10 OHM 1/6W +/-5%	RK01
08-277160-001	18-CB0102-JNX	RES. C.F. 1K OHM 1/6W +/-5%	RK02
08-277160-001	18-CB0102-JNX	RES. C.F. 1K OHM 1/6W +/-5%	RK04
08-277160-001	20-24642X-103	VARIABLE RES. B10K H=6.5 S=20	VR601
08-277160-001	25-BCB220-M11	CAP. ELEC 22 UF 16V +/-20%	CK01
08-277160-001	40-268740-0AC	P.C.B. FRONT CTL BD	
08-277160-001	41-BF0050-0BB	WIRE UL 1007 #24 50MM BLK	
08-277160-001	41-BF0050-3BB	WIRE UL 1007 #24 50MM ORG	
08-277160-001	41-WJ0075-B00	WIRE BARE JUMPER 7.5MM	RK03
08-277160-001	41-WJ0075-B00	WIRE BARE JUMPER 7.5MM	JK01
08-277160-001	41-WJ0075-B00	WIRE BARE JUMPER 7.5MM	JK02
08-277160-001	41-WJ0075-B00	WIRE BARE JUMPER 7.5MM	JK03
08-277160-001	46-26603H-097	HS 9P24 200 TJC3-9Y/SCN-9Y	P001H
08-277160-001	46-27778H-037	HS 3P SHIELD 370 TJC3/SCN-3Y	SP03H
08-277160-001	48-231010-00B	SW. TACT VERT. (H=4MM L=6.4MM)	SWK01
08-277160-001	48-231010-00B	SW. TACT VERT. (H=4MM L=6.4MM)	SWK02
08-277160-001	48-231010-00B	SW. TACT VERT. (H=4MM L=6.4MM)	SWK03
08-277160-001	48-231010-00B	SW. TACT VERT. (H=4MM L=6.4MM)	SWK04
08-277160-001	48-231010-00B	SW. TACT VERT. (H=4MM L=6.4MM)	SWK05
08-277160-001	48-231010-00B	SW. TACT VERT. (H=4MM L=6.4MM)	SWK06
08-277160-001	48-267660-00X	SWITCH SLIDE SK-22F05G13	SW601
08-277160-001	62-226920-1HA	HOLDER LED	
08-277160-001	62-251200-0UA	BRACKET (FRONT PCB)	
08-277160-001	62-256390-0HA	FRONT CONTROL BD HOLDER	
08-277160-001	63-B3010X-BT4	S/T SCREW B 3 X 10 BT	
08-277160-001	63-B3010X-BT4	S/T SCREW B 3 X 10 BT	
<b>08-278000-001</b>	<b>ASS'Y - IR TRANSMITTER BOARD</b>		

Assembly	Parts	Description	Location
08-278000-001	11-0BC338-0B1	TRANSISTOR BC338-40	Q1401
08-278000-001	13-9012F0-11P	IC TC9012F-011	IC1401
08-278000-001	15-0TSU54-02D	DIODE INFRARED TSU5402	D1401
08-278000-001	18-CB0229-JNX	RES. C.F. 2.2 OHM 1/6W +/-5%	R1401
08-278000-001	25-BBA100-K31	CAP. TAN 10 UF 10V +/-10%	C1403
08-278000-001	26-ABC101-JZX	CAP. CER 100 PF 50V +/-5% SL	C1401
08-278000-001	26-ABC101-JZX	CAP. CER 100 PF 50V +/-5% SL	C1402
08-278000-001	40-258610-0AA	P.C.B. HANDSET BD	
08-278000-001	41-AJ0075-BEE	WIRE BARE JUMPER 7.5MM	J1401
08-278000-001	45-120550-201	CER RESONATOR 455KHZ	X1401
08-278000-001	49-258641-00XAA	RUBBER PAD 32 KEYS	
08-278000-001	55-258330-0HABJ	CASE UPPER - REMOTE HANDSET	
08-278000-001	55-258340-0HA AE	CASE LOWER-REMOTE HANDSET	
08-278000-001	55-258350-0HA AE	DOOR BATTERY-REMOTE HANDSET	
08-278000-001	56-258360-0HC	LENS REMOTE HANDSET	
08-278000-001	58-25837S-0UIAH	INLAY IR TRANSMITTER BOARD	
08-278000-001	67-22223X-0E2	BATT. TERMINAL (+/-)	
08-278000-001	67-25865X-0E2	BATTERY CONTACT SPRING (+)	
08-278000-001	67-25866X-0E2	BATTERY CONTACT SPRING (-)	
08-278000-001	74-009022-60C	POLYBAG HANDSET	
<b>08-278141-001</b>	<b>ASS'Y - IF BOARD</b>		
08-278141-001	11-SC1815-YB1	TRANSISTOR 2SC1815Y	Q102
08-278141-001	11-SC388A-MB1	TRANSISTOR 2SC388ATM (RF AMPL)	Q101
08-278141-001	13-00LA75-77P	IC LA7577	IC101
08-278141-001	18-CB0101-JNX	RES. C.F. 100 OHM 1/6W +/-5%	R146
08-278141-001	18-CB0101-JNX	RES. C.F. 100 OHM 1/6W +/-5%	C101
08-278141-001	18-CB0102-JNX	RES. C.F. 1K OHM 1/6W +/-5%	R103
08-278141-001	18-CB0102-JNX	RES. C.F. 1K OHM 1/6W +/-5%	R120
08-278141-001	18-CB0102-JNX	RES. C.F. 1K OHM 1/6W +/-5%	R122
08-278141-001	18-CB0102-JNX	RES. C.F. 1K OHM 1/6W +/-5%	R135
08-278141-001	18-CB0150-JNX	RES. C.F. 15 OHM 1/6W +/-5%	R108
08-278141-001	18-CB0153-JNX	RES. C.F. 15K OHM 1/6W +/-5%	R119
08-278141-001	18-CB0182-JNX	RES. C.F. 1.8K OHM 1/6W +/-5%	R114
08-278141-001	18-CB0221-JNX	RES. C.F. 220 OHM 1/6W +/-5%	R106
08-278141-001	18-CB0222-JNX	RES. C.F. 2.2K OHM 1/6W +/-5%	R117
08-278141-001	18-CB0222-JNX	RES. C.F. 2.2K OHM 1/6W +/-5%	R145
08-278141-001	18-CB0224-JNX	RES. C.F. 220K OHM 1/6W +/-5%	R121
08-278141-001	18-CB0331-JNX	RES. C.F. 330 OHM 1/6W +/-5%	R148
08-278141-001	18-CB0331-JNX	RES. C.F. 330 OHM 1/6W +/-5%	R147
08-278141-001	18-CB0332-JNX	RES. C.F. 3.3K OHM 1/6W +/-5%	R129
08-278141-001	18-CB0470-JNX	RES. C.F. 47 OHM 1/6W +/-5%	R123
08-278141-001	18-CB0470-JNX	RES. C.F. 47 OHM 1/6W +/-5%	R102
08-278141-001	18-CB0471-JNX	RES. C.F. 470 OHM 1/6W +/-5%	R107
08-278141-001	18-CB0472-JNX	RES. C.F. 4.7K OHM 1/6W +/-5%	R118
08-278141-001	18-CB0562-JNX	RES. C.F. 5.6K OHM 1/6W +/-5%	R105
08-278141-001	20-201260-203	TRIMMER B20K VERT TYPE	VR101
08-278141-001	25-BCB101-M11	CAP. ELEC 100 UF 16V +/-20%	C115
08-278141-001	25-BFB478-K1A	CAP. ELEC 0.47UF 50V 10% CEC-K	C112
08-278141-001	25-BFB478-M11	CAP. ELEC 0.47 UF 50V +/-20%	C120
08-278141-001	26-ABC102-KBX	CAP. CER 1N PF 50V +/-10% B	C119
08-278141-001	26-ABC103-ZFX	CAP. CER 0.01 UF 50V +80-20% F	C104
08-278141-001	26-ABC103-ZFX	CAP. CER 0.01 UF 50V +80-20% F	C105
08-278141-001	26-ABC103-ZFX	CAP. CER 0.01 UF 50V +80-20% F	C111
08-278141-001	26-ABC103-ZFX	CAP. CER 0.01 UF 50V +80-20% F	C113
08-278141-001	26-ABC103-ZFX	CAP. CER 0.01 UF 50V +80-20% F	C114
08-278141-001	26-ABC103-ZFX	CAP. CER 0.01 UF 50V +80-20% F	C116

Assembly	Parts	Description	Location
08-278141-001	26-ABC103-ZFX	CAP. CER 0.01 UF 50V +80-20% F	C117
08-278141-001	26-ABC103-ZFX	CAP. CER 0.01 UF 50V +80-20% F	C121
08-278141-001	26-ABC103-ZFX	CAP. CER 0.01 UF 50V +80-20% F	C123
08-278141-001	26-ABC103-ZFX	CAP. CER 0.01 UF 50V +80-20% F	C126
08-278141-001	26-ABC103-ZFX	CAP. CER 0.01 UF 50V +80-20% F	C144
08-278141-001	26-ABC103-ZFX	CAP. CER 0.01 UF 50V +80-20% F	C136
08-278141-001	26-ABC103-ZFX	CAP. CER 0.01 UF 50V +80-20% F	C140
08-278141-001	26-ABC220-JCX	CAP. CER 22 PF 50V +/-5% NPO	C138
08-278141-001	26-ABC270-JCX	CAP. CER 27 PF 50V +/-5% NPO	C127
08-278141-001	26-ABC330-JCX	CAP. CER 33 PF 50V +/-5% NPO	C139
08-278141-001	26-ABC509-JCX	CAP. CER 5 PF 50V +/-5% NPO	C137
08-278141-001	27-PBC683-J01	CAP. P.E. 0.068 UF 50V +/-5%	C118
08-278141-001	34-A568K0-1IX	COIL CHOKE 0.56 UH +/-10%	L102
08-278141-001	34-R100J2-0EX	COIL PL - 10 UH +/-5%	L106
08-278141-001	34-R330J2-0EX	COIL PL - 33 UH +/-5%	L103
08-278141-001	38-236550-000	COIL I.F.T. 236550 FOR AFT	T104
08-278141-001	38-236560-000	COIL I.F.T. 236560 FOR VCO	T105
08-278141-001	38-258430-000	COIL I.F.T. TRF3290B 32MHZ	T108
08-278141-001	38-266450-000	COIL I.F.T. 266450 FOR MATCHIN	T102
08-278141-001	40-262361-0AC	P.C.B. IF BD	
08-278141-001	41-WJ0050-B00	WIRE BARE JUMPER 5MM	
08-278141-001	41-WJ0050-B00	WIRE BARE JUMPER 5MM	J107
08-278141-001	41-WJ0050-B00	WIRE BARE JUMPER 5MM	J101
08-278141-001	41-WJ0050-B00	WIRE BARE JUMPER 5MM	J105
08-278141-001	41-WJ0050-B00	WIRE BARE JUMPER 5MM	R104
08-278141-001	41-WJ0075-B00	WIRE BARE JUMPER 7.5MM	J102
08-278141-001	41-WJ0075-B00	WIRE BARE JUMPER 7.5MM	J103
08-278141-001	41-WJ0075-B00	WIRE BARE JUMPER 7.5MM	J104
08-278141-001	41-WJ0075-B00	WIRE BARE JUMPER 7.5MM	J106
08-278141-001	41-WJ0075-B00	WIRE BARE JUMPER 7.5MM	J108
08-278141-001	41-WJ0075-B00	WIRE BARE JUMPER 7.5MM	J109
08-278141-001	41-WJ0075-B00	WIRE BARE JUMPER 7.5MM	L101
08-278141-001	41-WJ0175-B00	WIRE BARE JUMPER 17.5MM	J119
08-278141-001	45-126172-300	SAW FILTER F1037C	Z101
08-278141-001	45-135070-600	CER. TRAP TPS 5.5MHZ	Z102
08-278141-001	54-128372-000	FIBRE TUBE D=1MM L=10MM	
08-278141-001	67-257880-0T0	SHIELD CAN BOTTOM	

TCL- 2568, 2588, 2828, 2988, 2989 & 2990 POWER SCHEMATIC DIAGRAM.



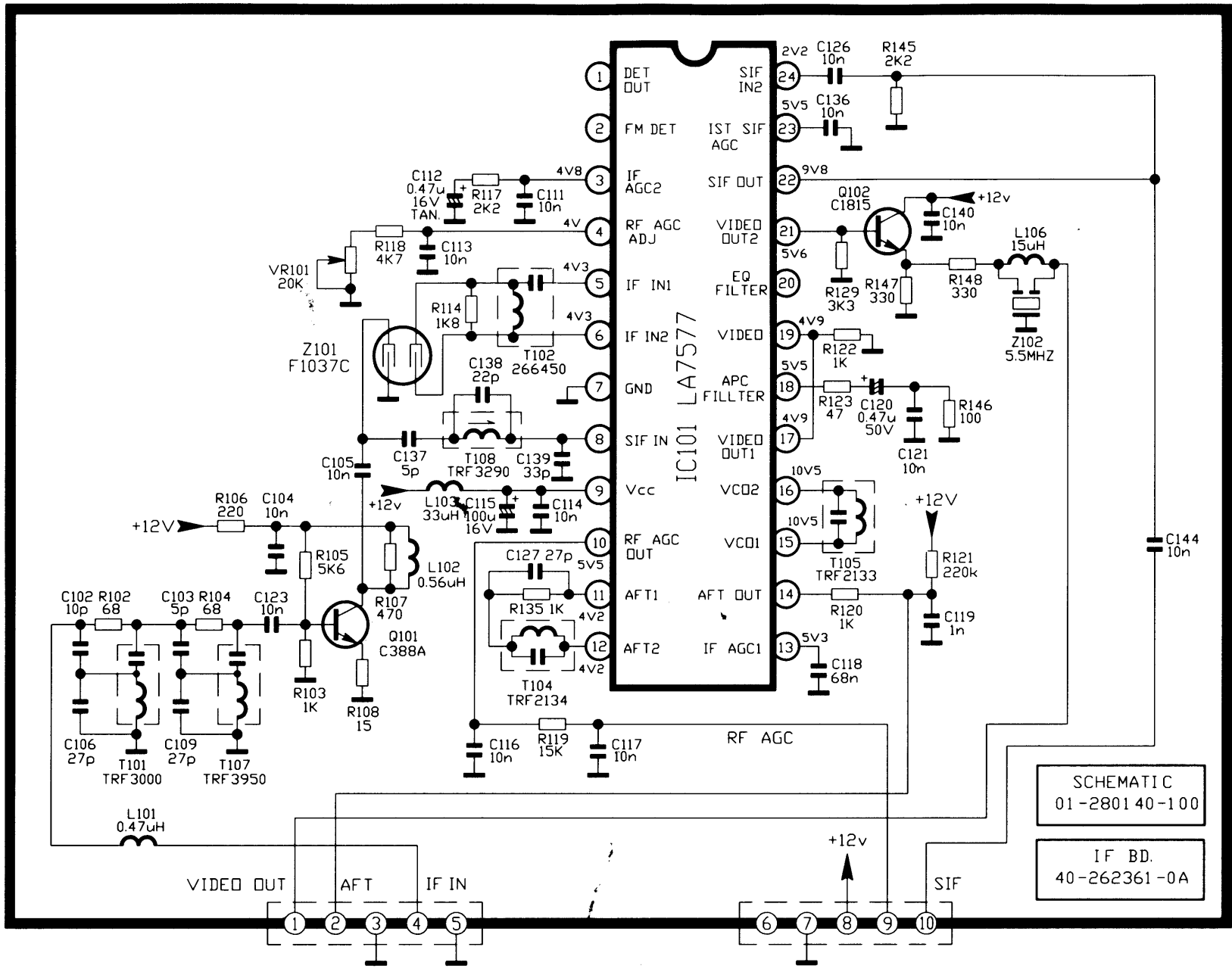
TCL ELECTRONICS (HK) LTD		
TITLE : POWER PART CIRCUIT DRAWING		
PART NO: 01-275590-100		
MATERIAL: 94V0 RAW BOARD		
MODELS USED: 2568,2588		
(WITHOUT SWITCHING BOARD)		
2828,2988,2989,2990		
(WITH SWITCHING BOARD)		
PREPARED BY:		
CHECKED BY:		
APPROVED BY:		
ISSUE	DESCRIPTION	DATE
1	NEW RELEASE	22/6/97
2	L815-JUMPER TO 1/1W FUS	29/9/97
3	R802A-NTC 15N-05 TO CEM. 3R3 7W	28/10/97
4	C801S,R801S,C802,C803,IC803 Add MARK	28/10/97

NOTE:  
FOR 25" TV, COMPONENTS ON SWITCHING BOARD WILL MOVE BACK TO POWER BOARD, WITHOUT CHANGING THE CIRCUITRY.

SCHEMATIC.  
01-275590-100

POWER BD.  
40-273691-0A





TCL ELECTRONICS (HK) LTD.

TITLE : IF CIRCUIT DRAWING

PART NO: 01-280140-100

MATERIAL: 94V0 RAW BOARD

MODELS USED: 2568,2588

2828,2988,2989

(WITH DUAL IF TRAPS)

PREPARED BY:

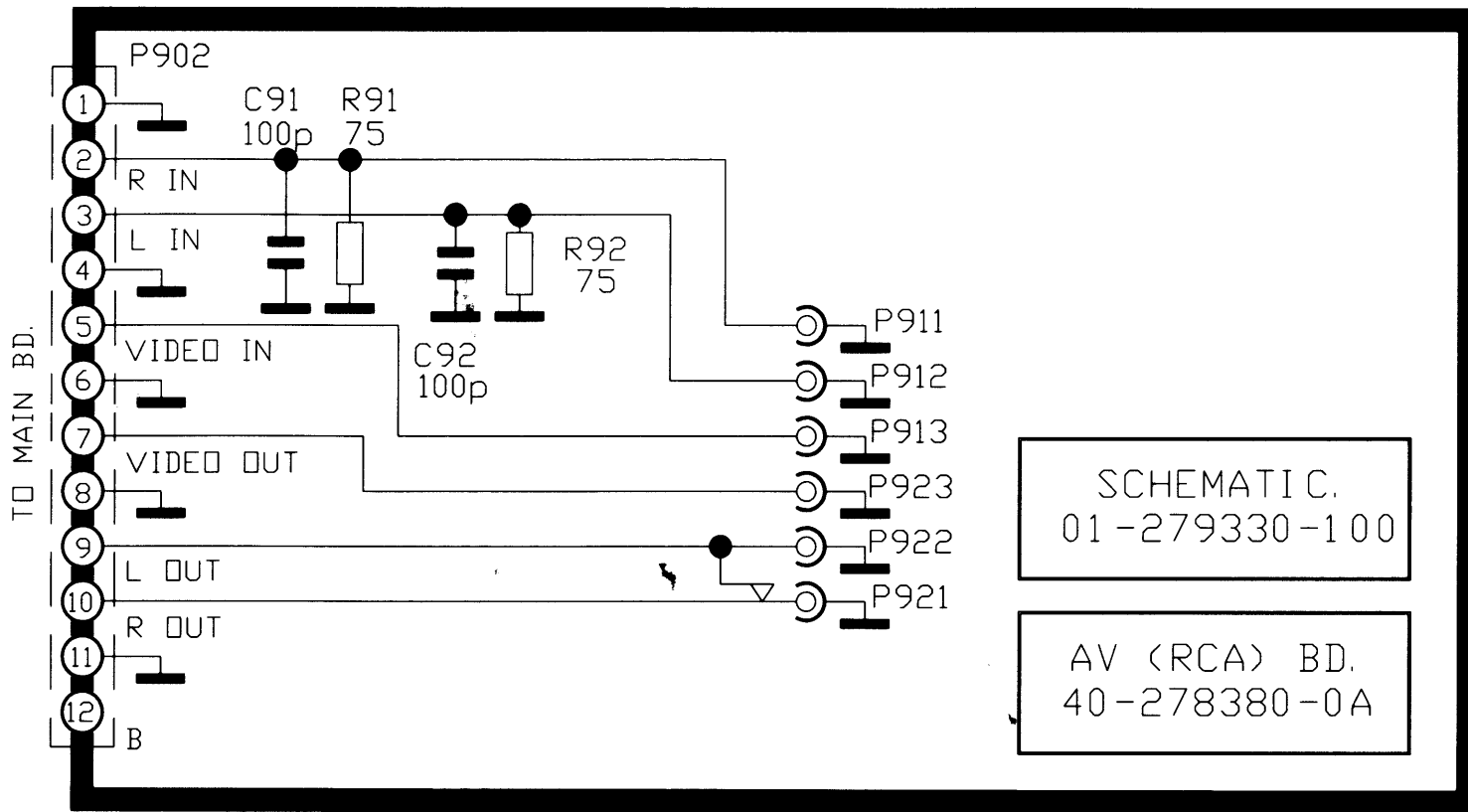
CHECKED BY:

APPROVED BY:

ISSUE	DESCRIPTION	DATE
1	NEW RELEASE	29/9/97

SCHEMATIC  
01-280140-100

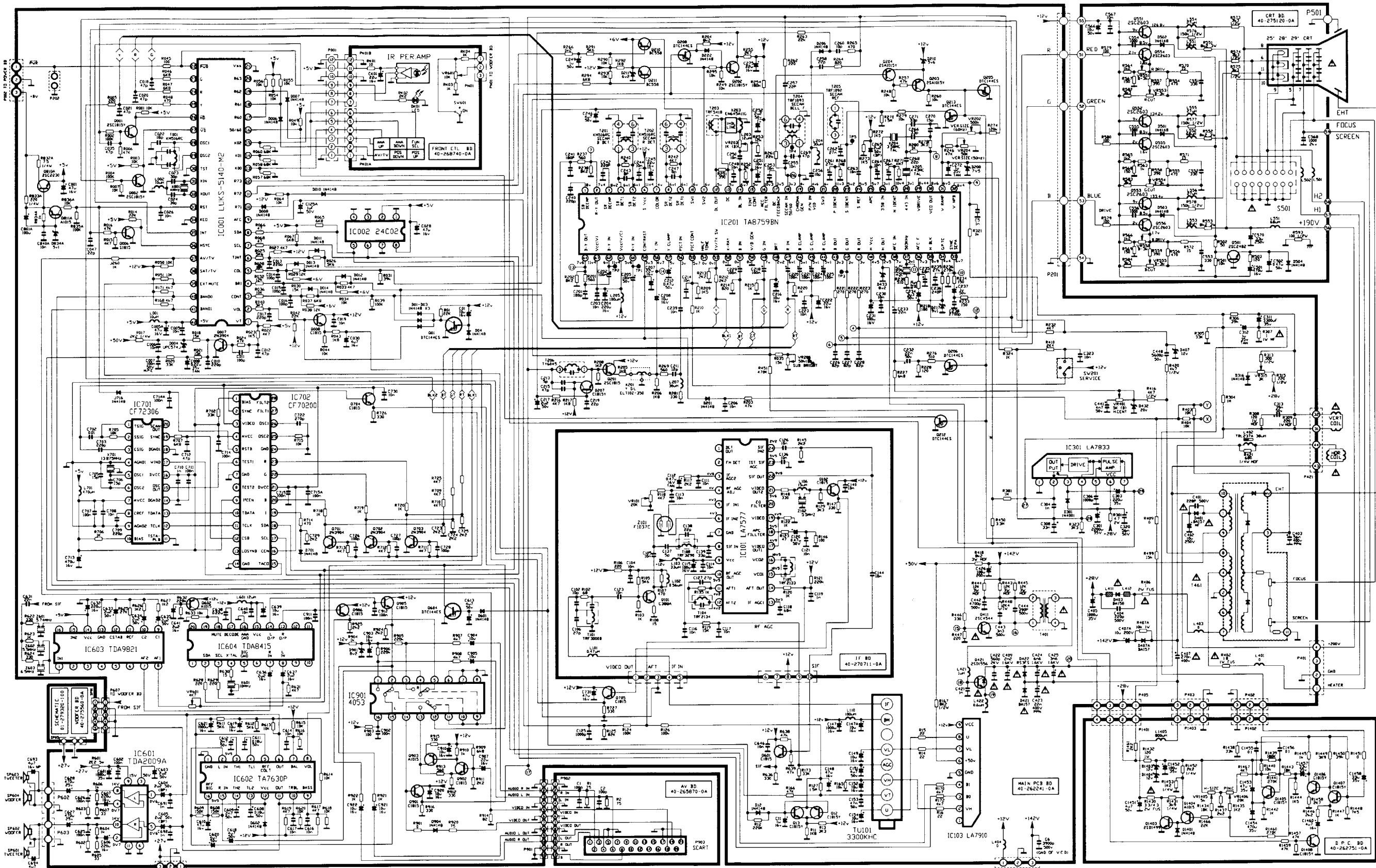
IF BD.  
40-262361-0A



SCHEMATIC.  
01-279330-100

AV (RCA) BD.  
40-278380-0A

TCL ELECTRONICS (HK) LTD.		
TITLE : RCA CIRCUIT DRAWING		
PART NO: 01-279330-100		
MATERIAL: 94V0 RAW BOARD		
MODELS USED: 2568,2588 2828,2988,2989,2990		
PREPARED BY:		
CHECKED BY:		
APPROVED BY:		
ISSUE	DESCRIPTION	DATE
1	NEW RELEASE	29/9/97



COMPANY: TCL ELECTRONICS (HK) LTD.		
DRAW NO: 01-278250-100	MAIN PCB NO: 40-262241-0A	FEATURES
ADD DRAWING:	ADD PCB NO:	FEATURES
01-278250-100	40-270711-0A	IF BOARD
01-278250-100	40-270720-0A	CRT BOARD
01-278250-100	40-262751-0A	SPEC BOARD
01-278250-100	40-262745-0A	FRONT CTL BD
01-278250-100	40-267701-0A	2029, 2969
01-278250-100	40-267301-0A	FRONT CTL BD
01-278250-100	40-265070-0A	2569, 2589
01-278250-100	40-256910-0A	FRONT CTL BD
01-278250-100	40-273691-0A	AV (SCART) BD
01-278250-100	40-273691-0A	POWER SW BR
01-278250-100	40-273691-0A	POWER BD
01-278250-100	40-275560-0A	CRT BOARD
01-278250-100	40-278380-0A	VOOFER BOARD
01-278250-100	40-278380-0A	AV (SCART) BD
01-278250-100	40-262761-0A	IF BOARD

NO. OF PAGES: 6		
MODELS: 2969 2989 2999		
SYSTEMS: PAL/SECAM B/G NTSC/AV 350/443		
FEATURES: STEREO B PAGES TELETEXT/VOOFER		
ISSUED BY:		
APPROVED BY:		
FINAL APPROVAL:		
ISSUE	DESCRIPTION	DATE
1	NEW RELEASE	19/6/97
2	R1432-120/05W *120/1W	29/9/97
	R1430-33/2W*33/43/2V FUS	
	R634 -> DELETED	
	D623 -> DELETED	
3	R1430- Add Extension Mark	28/10/97

SCHEMATIC 01-278250-100

